

Shipping Service Samples for .Net

This folder contains sample code for accessing Shipping services via the .Net Framework. Samples are provided for these operations:

- CreateShipment
- GetArtifact (Shipment and Manifest)
- GetShipmentPrice
- VoidShipment
- GetShipment
- GetShipmentDetails
- GetShipmentReceipt
- GetGroups
- GetShipments (Shipment and Manifest)
- TransmitShipments
- GetManifestArtifactId
- GetManifestDetails
- GetManifests
- GetCustomerInformation
- GetMoboCustomerInformation

About These Samples

- These samples are meant to accompany the [Developer Program Getting Started Guide](#). They will help you validate that your Developer Program account is set up correctly, and will help you create your first Shipping request.

Conventions

- **<install_directory>** - This is the file folder where you have extracted these code samples into. Examples may include: CPCWS_SOAP_Java_Samples; CPCWS_SOAP_DotNet_Samples, or CPCWS_SOAP_Tracking_PHP_Samples among others.

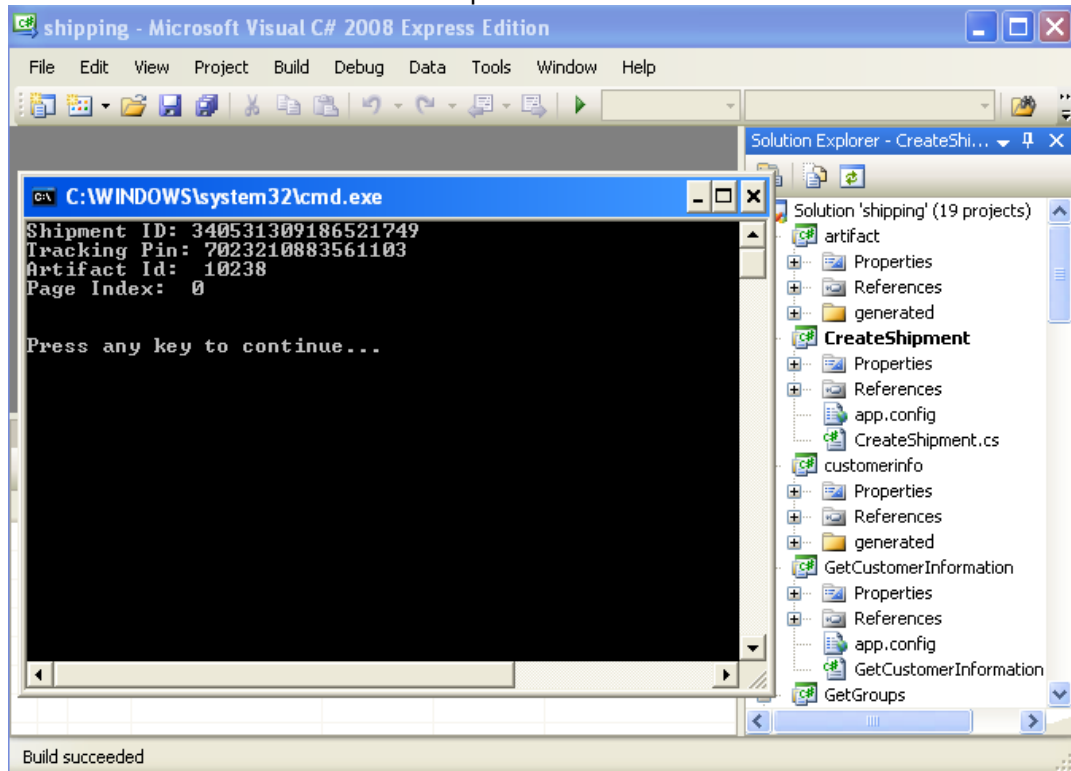
Prerequisites

- You must have a valid Developer Program developer account.
- You must be signed up to use Developer Program.
- Requires the Microsoft Visual C# 2008 or newer.

Running the Samples

- 1) Edit **<install_directory>\SOAP\shipping\user.xml** in the folder of extracted package.
 - a) Update this file with your Developer Program username, password and customer number.
- 2) Open .Net solution from extracted samples package using Visual C#.
 - a) From the main menu bar, select **File → Open Project....** The Open Project dialog box opens.
 - b) Browse directory of the extracted samples and select the **<install_directory>\SOAP\shipping\shipping.sln** file.
- 3) Execute the code sample.
 - a) Select **CreateShipment** project.

b) Press **Ctrl+F5** to execute the code sample.



4) Experiment with samples.