

Shipping Service Samples for Java

This folder contains sample code for accessing Shipping services via the java jersey client library. Samples are provided for these operations:

- CreateShipment
- GetArtifact (Shipment and Manifest)
- GetShipmentPrice
- VoidShipment
- GetShipment
- GetShipmentDetails
- GetShipmentReceipt
- GetGroups
- GetShipments (Shipment and Manifest)
- TransmitShipments
- GetManifest
- GetManifestDetails
- GetManifests
- GetCustomerInformation
- GetMoboCustomerInformation

About These Samples

- These samples are meant to accompany the [Developer Program Getting Started Guide](#). They will help you validate that your Developer Program account is set up correctly, and will help you create your first Shipping request.

Conventions

- **<install_directory>** - This is the file folder where you have extracted these code samples into. Examples may include: CPCWS_Java_Samples; CPCWS_DotNet_Samples, or CPCWS_Tracking_PHP_Samples among others.

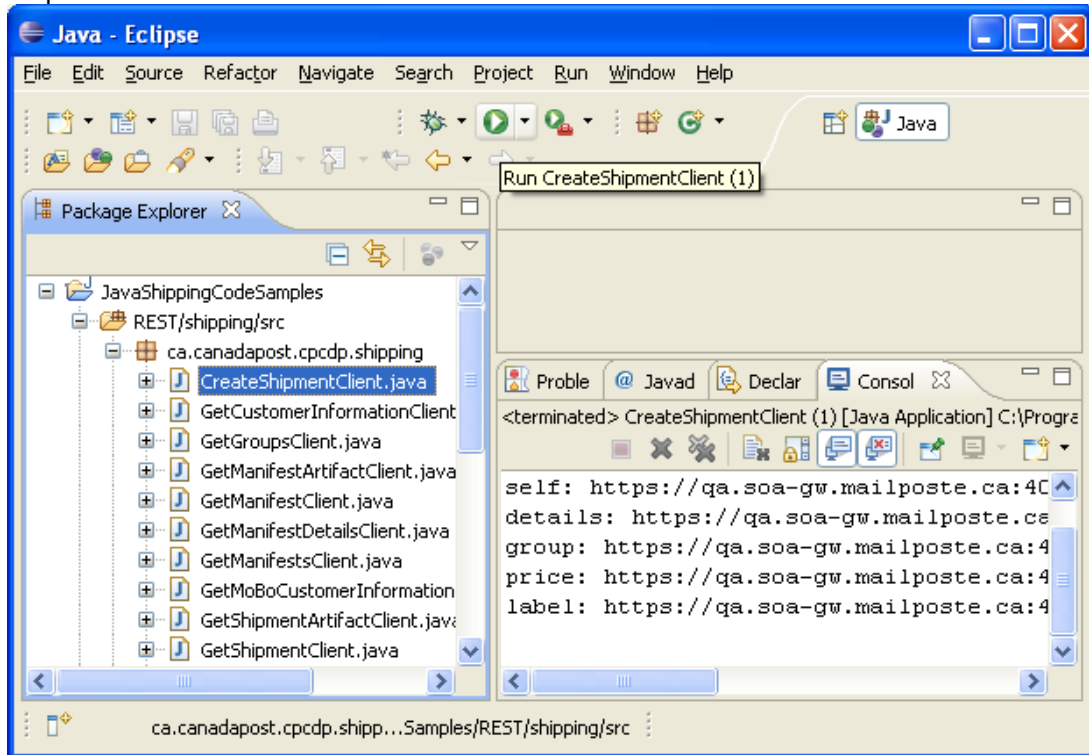
Prerequisites

- You must have a valid Developer Program account.
- You must be signed up to use Developer Program.
- Requires the Java™ Platform, Standard Edition 6 Development Kit (JDK™6) or newer (for more information, go to <http://www.oracle.com/technetwork/java/javase/downloads/index.html>). If your version of JDK is older than 6.0, you must install newer version.
 - Follow the instructions on the Sun Java web site to install the JDK
- Also requires Eclipse version 3.6 or newer.
 - Follow the instructions on the Eclipse website to install Eclipse. <http://www.eclipse.org>

Running the Samples

- 1) Edit **<install_directory>\user.properties** in the folder of extracted package.
 - a) Update this file with your Developer Program username, password and customer number.
- 2) Import Java Project from extracted samples package.
 - a) From the main menu bar, select **File → Import....** The Import wizard opens.
 - b) Select **General > Existing Project into Workspace** and click **Next**.

- c) Choose **Select root directory** and click the associated **Browse** to locate the directory of the extracted samples and select the **<install_directory>** directory.
 - d) Under **Projects** select the project or projects which you would like to import.
 - e) Click **Finish** to start the import.
- 3) Select **CreateShipmentClient** java file and Run as Java Application. View the output in the Eclipse console



- 4) Experiment with the other samples.