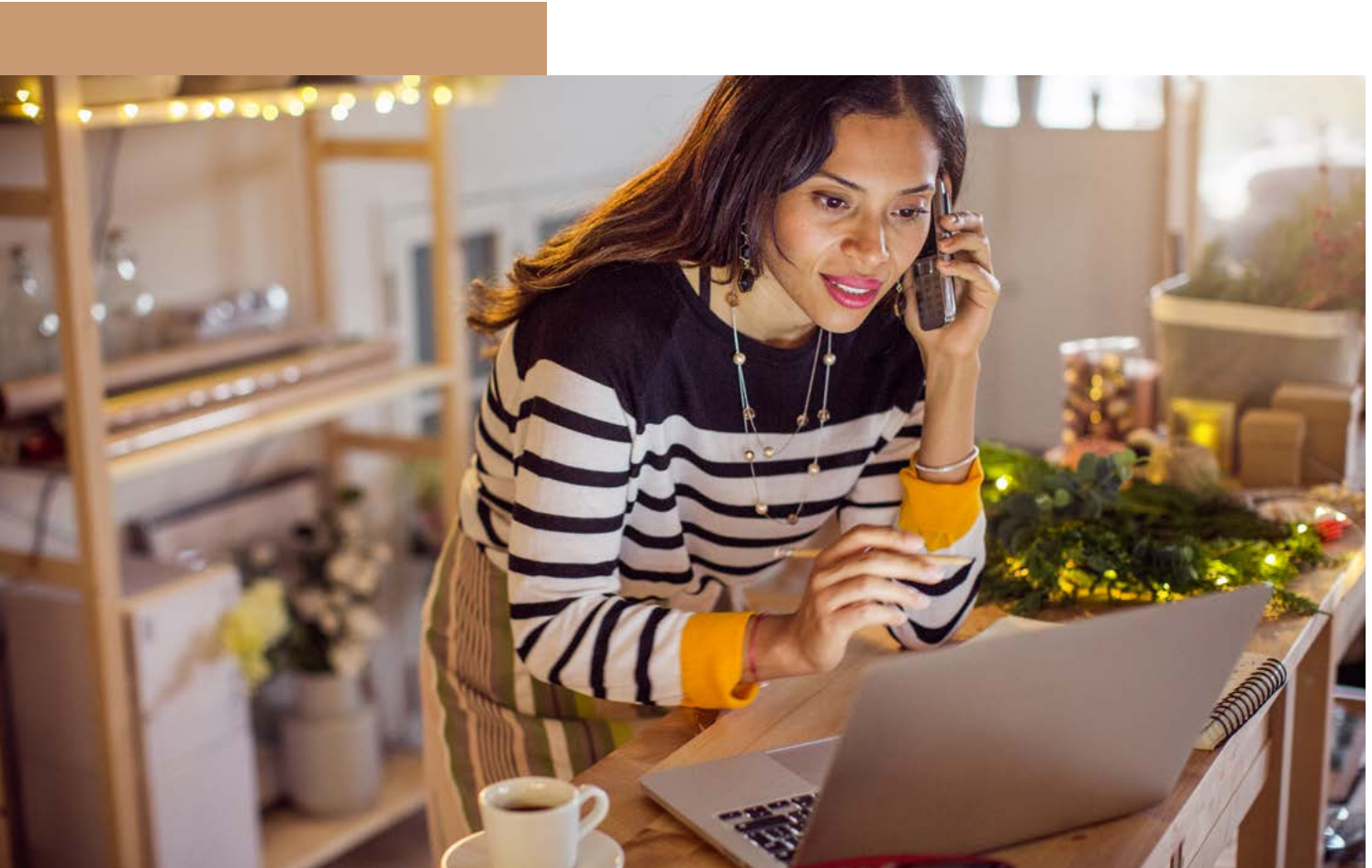




Consumer prices

The guide is available at canadapost.ca/prices.



Updated July 8, 2024.

Introduction

Consumer prices.....	1
----------------------	---

Canada

Features, options and other surcharges: Shipping within Canada.....	3
Prepaid products.....	4
Regional and National definition for Prepaid products.....	4
Priority Prepaid envelopes.....	5
Xpresspost Prepaid envelopes.....	5
Xpresspost Prepaid bubble envelopes.....	5
Flat rate boxes.....	5
Priority prices.....	6
Xpresspost prices.....	8
Regular Parcel prices.....	10
Lettermail prices.....	12
Speed.....	12
Features, options and surcharge prices.....	12
Lettermail pricing table.....	12

United States

Features, options and other surcharges: Shipping to U.S. destinations.....	14
Xpresspost – USA prices.....	15
Expedited Parcel – USA prices.....	17
Tracked Packet – USA prices.....	19
Small Packet – USA Air prices.....	20
Letter-post – USA prices.....	21
Size and speed.....	21
Features, options and surcharge prices.....	21
Letter-post pricing table.....	21

International

Features, options and other surcharges: Shipping to international destinations outside the U.S.....	23
Xpresspost – International prices.....	24
International Parcel – Air prices.....	26
International Parcel – Surface prices.....	28
Tracked Packet – International prices.....	30
Small Packet International prices.....	32
Letter-post – International.....	34
Size and speed.....	34
Features, options and surcharge prices.....	34
Letter-post pricing table.....	34

Other products and services

Mail Forwarding.....	36
Hold Mail.....	36
Postage supplies.....	37
Postage-paid envelopes.....	37
Official First Day Cover.....	37
Money Orders.....	38
Postal boxes.....	39
Replacement of keys.....	41

The *Canada Post Prices* guide is provided as a reference tool containing prices and related general information. It must be used together with the *Canada Postal Guide*, which provides details on all product and service requirements. Consult the *Canada Postal Guide* at: canadapost.ca/postalguide or call Customer Service at 1-866-607-6301.

Consumer prices

Consumer prices apply to customers who require that the counter staff weigh their item, calculate the price, and affix the postage. Solutions for Small Business™ cardholders pricing is found in the *Business Prices* book. Prices and fees may be changed without notice. In case of a discrepancy between printed and online versions, the online version prevails.

Customers should ensure they are using the most current version of *Canada Post Prices*, which is posted at canadapost.ca/prices.



Canada

Features, options and other surcharges: Shipping within Canada



For more information, refer to your *Parcel Services Customer Guide* or the *Canada Postal Guide* at canadapost.ca/postalservices.

PARCEL SERVICES: CANADA				
FEATURES AND OPTIONS	PRIORITY™	XPRESSPOST™	EXPEDITED PARCEL™	REGULAR PARCEL™
Tracking and delivery				
On-Time Delivery Guarantee	✓	✓	✓	
Tracking and Delivery Confirmation	✓	✓	✓	✓
Delivery Updates	✓	✓	✓	✓
Reference Number Tracking	✓	✓	✓	✓
Coverage and COD options				
Liability Coverage (up to \$100)	✓	✓	✓	\$2.75
Additional Liability Coverage (up to \$5,000) ¹			\$2.75 per additional \$100	
Collect on Delivery (COD) up to \$5,000 (up to 1,000 cash) ²	\$7.25	\$7.25	\$7.25	\$7.25
Environmental sustainability				
Carbon-neutral shipping			✓	✓
Signature and identity services				
Signature	■	\$2.00	\$2.00	\$2.00
Signature Hard Copy ³	\$7.25	\$7.25	\$7.25	\$7.25
Proof of Age ⁴	\$3.00	\$3.00	\$3.00	\$3.00
Flexible delivery options				
Leave at Door (Do Not Card) ⁴	✓	✓	✓	✓
Do Not Safe Drop ⁴	✓	✓	✓	✓
Card (Hold) for Pickup ⁴	✓	✓	✓	✓
Deliver to Post Office ⁴		✓	✓	
Pickup services				
Recurring (Scheduled) Pickup ⁵	Free with \$15,000 or more of annual parcel shipping purchases per pickup location / \$7.50 per week with \$2,500 to \$14,999 of the same purchases per pickup location			
Third-Party Recurring (Scheduled) Pickup ⁵	\$7.50 per week per additional address			
One-Time On-Demand Pickup ⁶	■	\$3.50	\$3.50	\$3.50
One-Time Third-Party On-Demand Pickup ⁶	■	\$3.50	\$3.50	\$3.50
Returns				
Parcel returns labels ⁴	\$	\$	\$	\$
Return to Sender ⁷	\$	\$	\$	\$
Redirection service				
Package Redirection ⁸	\$13.00	\$13.00	\$13.00	\$13.00
Other services and charges				
Mailing tube surcharge	\$2.00	\$2.00	\$2.00	\$2.00
Additional handling surcharge ⁹ (for oversized item, if length, width or height exceeds 1 m; and unpackaged item)	\$21.00	\$21.00	\$21.00	\$21.00
Manual document surcharge	\$2.00	\$2.00	\$2.00	\$2.00
Fuel surcharge may apply	Visit canadapost.ca/fuelsurcharge			
Non-transmitted order surcharge	\$25.00	\$25.00	\$25.00	\$25.00
Non-manifested item surcharge	\$2.00	\$2.00	\$2.00	\$2.00
Barcode label and address correction fee ¹⁰	\$7.00	\$7.00	\$7.00	\$7.00
Suspended order surcharge	\$25.00	\$25.00	\$25.00	\$25.00
Out-of-spec surcharge ¹¹	\$300.00	\$300.00	\$300.00	\$300.00

✓ Feature included in the service (no additional charge).

\$ Available for a fee.

■ Available as a no-charge option for the Priority service.

- The purchase of the Signature option is mandatory for additional Liability Coverage.
- Some exceptions apply to acceptable methods of payments. For more details, see section 2.3.4.3. in the *Parcel Services Customer Guide*.
- Signature image is available at no additional charge.
- Available for shipments prepared with Canada Post's Electronic Shipping Tools (EST) or a customer-developed/third-party shipping system.
- Visit canadapost.ca/pickup to see where Canada Post offers Pickup Services or to request a pickup.
- One-Time On-Demand Pickup is free when customers have an active subscription to the Recurring (Scheduled) Pickup service. Visit canadapost.ca/pickup to see where Canada Post offers Pickup Services or to request a pickup.
- All associated Return to Sender shipping fees are the responsibility of the customer and are based on the greater of the actual weight or volumetric equivalent of actual weight.
- The fee for Package Redirection is per package. Shipping costs to the new destination address also apply. Payment will apply upon successful redirection. Package Redirection is eligible for tracked parcels processed through the Canada Post network and destined for Canadian addresses. View the **terms and conditions** including eligibility requirements.
- The unpackaged item and oversized item surcharges will not be combined. Customers mailing unpackaged items that are also oversized will only be charged a single fee. For more details, see section 6.7 in the *Parcel Services Customer Guide*.
- The barcode label and address correction fee will not be combined. Customers with an illegible barcode that also have an incomplete or incorrect address will only be charged a single fee of \$7.
- For an item that exceeds our maximum size or weight specifications (any dimension over 2 m; length and girth combined over 3 m; weight over 30 kg).

NOTE: All options must be selected at the time of shipping. Exceptions and conditions apply. Visit canadapost.ca/postalguide.

™ Trademark of Canada Post Corporation.

Prepaid products are flat-priced, postage-included items that can be purchased in advance for later use.

Prepaid envelopes allow customers to access postage-paid, flat-rated domestic delivery services. These envelopes are a time-saving and hassle-free solution for managing document shipments – simply purchase the envelopes in advance so you always have them available.

Regional and National definition for Prepaid products

Regional: For use between points within the same region.

National: For use between regions within Canada.

Region descriptions

REGION	DESCRIPTION
Atlantic	Newfoundland and Labrador, Prince Edward Island, Nova Scotia and New Brunswick
Central	Quebec and Ontario, including Northwestern Ontario (postal codes P7A-P7L, P8N, P8T, P9A, P9N, P0T-P0Y)
Western	British Columbia, Alberta, Saskatchewan, Manitoba and Northwestern Ontario (postal codes P7A-P7L, P8N, P8T, P9A, P9N, P0T-P0Y)
Nunavut East	X0A
Nunavut West	X0B and X0C
Northwest Territories	X0E, X0G and X1A
Yukon	Yukon

Visit canadapost.ca/postalservices for additional information.

Prepaid products are available in post offices or can be ordered at canadapost.ca/shop.

Priority™ Prepaid envelopes

QUANTITY	REGIONAL PRICE		NATIONAL PRICE	
	MEDIUM (318 x 241 mm)	LARGE (394 x 314 mm)	MEDIUM (318 x 241 mm)	LARGE (394 x 314 mm)
Each	\$38.50	\$41.40	\$55.10	\$65.35

NOTE: Maximum weight: medium = 500 g; large = 1 kg.
Maximum thickness: medium = 15 mm; large = 30 mm.

Xpresspost™ Prepaid envelopes

QUANTITY	REGIONAL PRICE			NATIONAL PRICE		
	SMALL (260 x 159 mm)	MEDIUM (318 x 241 mm)	LARGE (394 x 314 mm)	SMALL (260 x 159 mm)	MEDIUM (318 x 241 mm)	LARGE (394 x 314 mm)
Each	\$16.95	\$19.00	\$24.55	\$26.15	\$27.05	\$42.65
Value pack (where available)	\$61.00	\$68.40	N/A	\$94.15	\$97.40	N/A

NOTE: Maximum weight: small = 500 g; medium = 500 g; large = 1 kg.
Maximum thickness: small = 15 mm; medium = 15 mm; large = 30 mm.

Xpresspost™ Prepaid bubble envelopes

QUANTITY	REGIONAL PRICE		NATIONAL PRICE	
	SMALL (247 x 190 mm)	LARGE (400 x 292 mm)	SMALL (247 x 190 mm)	LARGE (400 x 292 mm)
Each	\$17.70	\$25.35	\$26.90	\$43.40

NOTE: Maximum weight: small = 500 g; large = 1.36 kg.
No maximum thickness.

Flat rate boxes

QUANTITY	PRICE			
	EXTRA SMALL 241 x 165 x 89 mm	SMALL (350 x 260 x 50 mm)	MEDIUM (390 x 260 x 120 mm)	LARGE (400 x 300 x 190 mm)
Each	\$17.99	\$19.99	\$24.99	\$32.99

NOTE: Maximum weight, 5 kg.

Flat rate boxes are available at post offices. They can also be purchased online through Direct Ship in bundles of 12.

No discount is available for this product.

WEIGHT (up to and including)		RATE CODE / PRICE (\$)																						
in (kg) or VE*	in (lb.) or VE*	A1	A2	A3	A4	A5	A6	B1	B2	B3	B4	B5	C1	C2	C3	C4	C5	D1	D2	D3	D4	D5	D6	D7
0.5	1.1	22.94	26.17	22.83	23.27	25.71	25.05	28.79	28.87	29.75	29.56	30.27	28.74	30.87	29.10	30.85	30.14	35.16	35.16	37.89	37.54	38.68	36.55	38.36
0.75	1.7	23.61	26.95	23.28	23.95	26.22	25.79	29.64	29.57	30.34	30.44	30.87	29.30	31.48	29.67	31.46	30.73	35.95	35.85	38.64	38.29	39.44	37.27	39.10
1.0	2.2	24.73	28.27	24.42	25.02	27.42	27.10	31.16	31.09	31.84	31.94	32.54	30.75	33.28	30.99	33.26	32.26	38.29	38.29	41.16	40.72	42.21	39.73	41.95
1.5	3.3	25.30	28.87	24.99	25.62	27.97	27.80	31.85	31.77	32.45	32.57	33.19	31.34	33.88	31.61	33.86	32.92	39.04	39.00	41.95	41.50	43.42	40.49	43.16
2.0	4.4	26.02	29.17	25.66	26.33	28.78	28.72	32.72	32.65	33.36	33.48	34.12	32.20	34.85	32.51	34.83	33.83	40.05	40.06	43.01	42.63	44.63	41.54	44.31
2.5	5.5	26.75	29.27	26.40	27.04	29.55	29.64	33.53	33.45	34.27	34.40	35.06	33.09	35.83	33.37	35.80	34.77	41.08	41.07	44.18	43.67	45.73	42.63	45.48
3.0	6.6	27.15	29.69	26.76	27.47	29.98	30.07	34.00	33.92	34.72	34.84	35.52	33.53	36.31	33.83	36.29	35.20	41.63	41.64	44.79	44.20	46.28	43.21	46.09
3.5	7.7	27.78	30.38	27.44	28.13	30.58	30.79	34.79	34.68	35.51	35.64	36.31	34.31	37.11	34.60	37.10	35.98	42.58	42.58	45.79	45.14	47.24	44.19	47.13
4.0	8.8	28.29	31.09	28.06	28.79	31.27	31.49	35.57	35.49	36.29	36.42	37.10	35.07	37.94	35.36	37.92	36.77	43.52	43.52	46.81	46.04	48.21	45.16	48.18
4.5	9.9	28.95	31.76	28.71	29.44	31.98	32.05	36.15	36.26	36.89	37.20	37.91	35.81	38.75	36.13	38.73	37.53	44.43	44.46	47.79	46.97	49.17	46.13	49.20
5.0	11.0	29.57	32.45	29.34	30.08	32.68	32.76	36.93	37.03	37.66	37.97	38.69	36.57	39.57	36.88	39.54	38.30	45.38	45.39	48.79	47.87	50.13	47.09	50.24
5.5	12.1	30.21	33.14	29.99	30.73	33.38	33.46	37.72	37.79	38.43	38.73	39.47	37.32	40.38	37.65	40.33	39.07	46.27	46.27	49.73	48.76	51.05	48.02	51.21
6.0	13.2	30.85	33.81	30.59	31.38	34.08	34.17	38.47	38.55	39.18	39.50	40.24	38.04	41.17	38.41	41.13	39.84	47.14	47.14	50.67	49.65	51.97	48.91	52.18
6.5	14.3	31.48	34.50	31.21	32.02	34.79	34.85	39.23	39.32	39.94	40.27	41.00	38.80	41.98	39.14	41.92	40.60	48.03	48.03	51.59	50.50	52.93	49.82	53.15
7.0	15.4	32.13	35.16	31.85	32.65	35.48	35.54	39.97	40.08	40.71	41.05	41.80	39.53	42.79	39.89	42.71	41.35	48.89	48.89	52.50	51.39	53.87	50.73	54.11
7.5	16.5	32.74	35.84	32.46	33.28	36.16	36.25	40.75	40.85	41.48	41.81	42.57	40.28	43.58	40.64	43.49	42.09	49.77	49.77	53.44	52.27	54.84	51.63	55.08
8.0	17.6	33.35	36.51	33.08	33.92	36.85	36.93	41.50	41.61	42.22	42.56	43.34	40.99	44.38	41.37	44.28	42.86	50.63	50.63	54.37	53.10	55.78	52.52	56.00
8.5	18.7	33.97	37.18	33.69	34.55	37.55	37.60	42.24	42.34	42.94	43.30	44.09	41.71	45.16	42.10	45.05	43.59	51.51	51.50	55.26	53.98	56.71	53.38	56.96
9.0	19.8	34.59	37.82	34.31	35.18	38.21	38.28	42.96	43.09	43.69	44.05	44.84	42.44	45.96	42.84	45.83	44.32	52.37	52.35	56.19	54.82	57.66	54.28	57.90
9.5	20.9	35.21	38.48	34.90	35.81	38.90	38.97	43.71	43.83	44.44	44.78	45.59	43.16	46.71	43.56	46.61	45.05	53.22	53.20	57.09	55.65	58.59	55.16	58.82
10.0	22.0	35.81	39.14	35.53	36.41	39.58	39.63	44.47	44.57	45.17	45.54	46.35	43.89	47.48	44.31	47.37	45.81	54.06	54.05	57.98	56.50	59.53	56.04	59.78
10.5	23.1	36.42	39.80	36.11	37.04	40.24	40.30	45.20	45.30	45.90	46.28	47.09	44.62	48.26	45.03	48.15	46.54	54.91	54.90	59.16	57.34	60.47	56.92	60.73
11.0	24.2	37.03	40.45	36.72	37.66	40.91	40.99	45.92	46.04	46.63	47.01	47.85	45.30	49.00	45.73	48.90	47.27	55.75	55.76	60.07	58.19	61.38	57.79	61.62
11.5	25.3	37.63	41.10	37.32	38.26	41.55	41.64	46.65	46.76	47.36	47.73	48.59	46.03	49.80	46.45	49.65	48.00	56.58	56.57	60.94	58.99	62.30	58.66	62.55
12.0	26.4	38.21	41.74	37.91	38.86	42.24	42.32	47.37	47.49	48.06	48.46	49.33	46.73	50.54	47.18	50.43	48.70	57.42	57.41	61.85	59.84	63.21	59.51	63.46
12.5	27.5	38.82	42.38	38.51	39.47	42.89	42.96	48.08	48.22	48.79	49.17	50.06	47.42	51.31	47.87	51.16	49.44	58.26	58.24	62.70	60.66	64.12	60.37	64.38
13.0	28.6	39.43	42.99	39.09	40.11	43.55	43.60	48.80	48.91	49.51	49.91	50.79	48.11	52.06	48.57	51.91	50.13	59.08	59.07	63.60	61.46	65.02	61.23	65.29
13.5	29.7	40.02	43.64	39.68	40.69	44.20	44.26	49.53	49.63	50.22	50.62	51.52	48.81	52.81	49.27	52.68	50.84	59.92	59.87	64.49	62.29	65.90	62.06	66.19
14.0	30.8	40.58	44.26	40.26	41.28	44.86	44.90	50.23	50.34	50.93	51.32	52.24	49.49	53.56	49.97	53.40	51.55	60.72	60.72	65.34	63.11	66.82	62.92	67.10
14.5	31.9	41.20	44.91	40.84	41.88	45.51	45.55	50.93	51.05	51.63	52.05	52.95	50.18	54.29	50.66	54.15	52.24	61.54	61.53	66.22	63.90	67.69	63.74	67.96
15.0	33.0	41.77	45.54	41.42	42.48	46.14	46.20	51.63	51.76	52.35	52.75	53.67	50.86	55.05	51.35	54.88	52.96	62.33	62.35	67.08	64.71	68.60	64.60	68.87
15.5	34.1	42.33	46.17	41.98	43.07	46.79	46.84	52.35	52.46	53.01	53.46	54.38	51.55	55.78	52.05	55.60	53.65	63.14	63.13	67.94	65.50	69.46	65.41	69.75
16.0	35.2	42.99	46.85	42.55	43.66	47.41	47.46	53.01	53.12	53.67	54.12	55.04	52.14	56.51	52.64	56.46	54.80	64.00	64.00	68.80	66.34	70.32	66.26	70.64
16.5	36.3	43.61	47.56	43.17	44.28	48.06	48.11	53.67	53.78	54.33	54.78	55.70	52.74	57.32	53.17	57.01	55.96	64.87	64.86	69.67	67.19	71.02	67.07	71.35
17.0	37.4	44.26	48.27	43.79	44.89	48.67	48.72	54.28	54.39	54.94	55.39	56.31	52.84	58.10	53.46	58.10	56.84	65.74	65.73	70.56	68.07	71.47	67.18	71.46
17.5	38.5	44.91	48.98	44.40	45.50	49.26	49.31	54.93	55.04	55.59	56.04	56.96	52.96	58.79	53.74	58.79	57.58	66.61	66.60	71.47	68.98	71.58	67.29	71.57
18.0	39.6	45.58	49.74	45.01	46.19	50.00	50.05	55.62	55.73	56.28	56.73	57.65	53.08	59.48	54.19	59.48	58.27	67.50	67.49	72.40	69.90	71.69	67.40	71.68
18.5	40.7	46.26	50.51	45.62	46.88	50.79	50.84	56.31	56.42	56.97	57.42	58.34	53.20	60.17	54.50	60.17	59.06	68.39	68.38	73.24	70.71	71.80	67.51	71.81
19.0	41.8	46.96	51.27	46.23	47.64	51.58	51.63	57.00	57.11	57.66	58.11	59.03	53.32	60.86	55.11	60.86	59.65	69.28	69.27	74.00	71.11	72.01	67.62	71.92
19.5	42.9	47.69	52.02	46.85	48.45	52.40	52.45	57.63	57.74	58.29	58.74	59.66	53.44	61.55	55.72	61.55	60.44	70.17	70.16	74.75	71.86	72.76	67.73	72.03
20.0	44.0	48.43	52.78	47.46	49.26	53.34	53.39	58.26	58.37	58.92	59.37	60.29	53.56	62.24	56.33	62.24	61.23	71.06	71.05	75.50	72.61	73.51	67.84	72.14
20.5	45.1	49.18	53.53	48.07	49.97	54.29	54.34	58.91	59.02	59.57	60.02	60.94	53.68	62.93	57.02	62.93	61.92	71.95	71.94	76.25	73.36	74.26	67.95	72.25
21.0	46.2	49.95	54.28	48.68	50.76	55.24	55.29	59.56	59.67	60.22	60.67	61.59	53.80	63.62	57.71	63.62	62.61	72.84	72.83	77.00	74.11	75.01	68.06	72.36
21.5	47.3	50.72	55.03	49.29	51.55	56.19	56.24	60.15	60.26	60.81	61.26	62.18	53.92	64.31	58.40	64.31	63.30	73.73	73.72	77.75	74.86	75.76	68.17	72.47
22.0	48.4	51.50	55.78	49.90	52.36	57.14	57.19	60.78	60.89	61.44	61.89	62.81	54.04	65.00	59.09	65.00	64.00	74.62	74.61	78.50	75.61	76.51	68.28	72.58
22.5	49.5	52.27	56.53	50.51	53.17	58.09	58.14	61.41	61.52	62.07	62.52	63.44	54.16	65.69	59.78	65.69	64.70	75.51	75.50	79.20	76.31	77.21	68.39	72.69
23.0	50.6	53.04	57.28	51.12	53.98	59.04	59.09	62.03	62.14	62.69	63.14	64.06	54.28	66.38	60.47	66.38	65.40	76.42	76.41	80.10	77.21	78.11	68.50	72.80
23.5	51.7	53.81	58.03	51.73	54.79	59.99	60.04	62.64	62.75	63.30	63.75	64.67	54.40	67.07	61.16	67.07	66.00							

WEIGHT (up to and including)

RATE CODE / PRICE (\$)

in (kg) or VE*	in (lb.) or VE*	E1	E2	E3	E4	E5	F1	F2	F3	F4	F5	F6	G1	G2	G3	G4	H1	H2	H3	H4	H5
0.5	1.1	43.64	43.29	43.62	43.72	44.05	47.32	47.75	56.15	56.70	57.84	58.41	49.10	48.62	48.85	49.31	57.98	57.43	66.91	46.51	68.55
0.75	1.7	44.49	44.14	44.49	44.58	44.90	48.24	48.69	57.27	57.82	58.98	59.55	50.07	49.57	49.82	50.26	59.11	58.56	68.22	47.43	69.91
1.0	2.2	46.54	46.14	46.52	46.63	46.99	51.08	51.56	59.66	60.22	61.43	62.03	52.38	51.85	52.13	52.56	62.85	62.24	71.47	49.60	73.22
1.5	3.3	50.39	50.00	50.40	50.53	50.90	55.25	55.77	64.47	65.08	66.38	67.03	56.57	56.03	56.30	56.76	68.90	68.24	76.78	53.58	78.71
2.0	4.4	54.75	54.27	54.74	54.89	55.28	59.85	60.43	69.64	70.32	71.74	72.42	61.26	60.68	60.97	61.50	74.52	73.81	82.95	58.03	85.00
2.5	5.5	59.17	58.66	59.15	59.28	59.72	64.42	65.05	74.79	75.53	77.05	77.81	66.03	65.39	65.70	66.28	80.13	79.37	89.14	62.54	91.32
3.0	6.6	62.40	61.90	62.40	62.56	62.99	67.88	68.54	78.42	79.17	80.78	81.55	69.58	68.89	69.23	69.82	84.28	83.49	93.51	65.89	95.81
3.5	7.7	66.22	65.66	66.21	66.38	66.84	71.97	72.65	82.71	83.52	85.21	86.02	73.71	73.02	73.37	74.00	89.18	88.34	98.69	69.83	101.14
4.0	8.8	69.99	69.42	70.00	70.16	70.70	76.00	76.74	86.99	87.85	89.62	90.47	77.86	77.11	77.47	78.16	94.08	93.16	103.84	73.75	106.45
4.5	9.9	73.76	73.16	73.77	73.95	74.49	80.03	80.83	91.28	92.15	94.03	94.93	81.98	81.19	81.58	82.28	98.94	97.98	109.00	77.65	111.73
5.0	11.0	77.53	76.88	77.53	77.73	78.27	84.05	84.89	95.51	96.43	98.39	99.34	86.08	85.24	85.65	86.40	103.80	102.79	114.10	81.52	116.99
5.5	12.1	81.17	80.54	81.20	81.38	81.97	87.94	88.80	99.62	100.61	102.65	103.65	90.08	89.23	89.63	90.41	108.48	107.44	119.11	85.33	122.10
6.0	13.2	84.83	84.14	84.84	85.02	85.66	91.83	92.72	103.75	104.76	106.90	107.95	94.06	93.17	93.62	94.43	113.15	112.08	124.05	89.11	127.18
6.5	14.3	88.46	87.75	88.45	88.69	89.33	95.69	96.62	107.85	108.89	111.13	112.20	98.03	97.09	97.57	98.41	117.82	116.68	129.01	92.85	132.21
7.0	15.4	92.07	91.32	92.07	92.30	92.96	99.54	100.50	111.92	112.99	115.35	116.47	101.99	101.01	101.50	102.37	122.47	121.27	133.91	96.59	137.24
7.5	16.5	95.66	94.88	95.66	95.90	96.58	103.35	104.34	115.96	117.09	119.54	120.68	105.93	104.91	105.41	106.34	127.08	125.86	138.80	100.33	142.23
8.0	17.6	99.26	98.43	99.25	99.50	100.21	107.18	108.22	120.00	121.17	123.72	124.91	109.84	108.79	109.32	110.26	131.68	130.42	143.67	104.03	147.23
8.5	18.7	102.80	101.96	102.83	103.06	103.82	110.97	112.06	124.01	125.22	127.86	129.09	113.73	112.66	113.21	114.18	136.27	134.97	148.54	107.73	152.20
9.0	19.8	106.36	105.50	106.36	106.62	107.39	114.74	115.87	128.02	129.26	132.00	133.29	117.64	116.50	117.06	118.09	140.82	139.49	153.35	111.42	157.15
9.5	20.9	109.91	109.00	109.90	110.16	110.97	118.51	119.65	132.00	133.29	136.12	137.44	121.51	120.32	120.91	121.96	145.37	143.96	158.15	115.09	162.07
10.0	22.0	113.42	112.48	113.42	113.69	114.51	122.27	123.45	135.96	137.29	140.21	141.59	125.35	124.16	124.73	125.85	149.88	148.46	162.96	118.74	166.94
10.5	23.1	116.94	115.97	116.91	117.20	118.06	125.99	127.22	139.90	141.28	144.29	145.69	129.19	127.95	128.57	129.68	154.39	152.93	167.71	122.37	171.84
11.0	24.2	120.40	119.43	120.39	120.69	121.56	129.71	130.96	143.85	145.23	148.36	149.81	132.99	131.72	132.36	133.50	158.89	157.37	172.47	125.97	176.69
11.5	25.3	123.88	122.86	123.87	124.19	125.10	133.39	134.69	147.76	149.21	152.39	153.91	136.80	135.49	136.16	137.32	163.32	161.77	177.18	129.56	181.52
12.0	26.4	127.33	126.29	127.33	127.65	128.57	137.06	138.40	151.67	153.11	156.43	157.97	140.58	139.21	139.92	141.12	167.80	166.16	181.90	133.16	186.31
12.5	27.5	130.77	129.70	130.76	131.07	132.05	140.73	142.11	155.54	157.03	160.46	162.02	144.33	142.96	143.66	144.90	172.18	170.54	186.55	136.72	191.12
13.0	28.6	134.21	133.12	134.21	134.52	135.51	144.40	145.79	159.39	160.93	164.44	166.05	148.09	146.66	147.39	148.66	176.61	174.91	191.21	140.29	195.89
13.5	29.7	137.60	136.50	137.63	137.95	138.94	148.01	149.45	163.23	164.84	168.42	170.05	151.83	150.36	151.11	152.39	180.98	179.25	195.86	143.81	200.62
14.0	30.8	141.01	139.86	141.02	141.36	142.37	151.63	153.09	167.06	168.68	172.38	174.02	155.54	154.05	154.79	156.15	185.35	183.55	200.49	147.33	205.35
14.5	31.9	144.40	143.21	144.41	144.75	145.80	155.22	156.72	170.88	172.52	176.31	178.06	159.24	157.71	158.47	159.84	189.67	187.86	205.07	150.81	210.06
15.0	33.0	147.77	146.56	147.76	148.13	149.19	158.79	160.33	174.66	176.35	180.22	181.98	162.93	161.34	162.13	163.53	193.99	192.12	209.67	154.32	214.74
15.5	34.1	151.10	149.87	151.10	151.46	152.58	162.36	163.93	178.43	180.16	184.14	185.92	166.59	164.98	165.78	167.22	198.31	196.39	214.20	157.78	219.40
16.0	35.2	154.49	153.21	154.49	154.86	156.03	165.81	167.48	182.49	184.28	188.29	192.46	170.24	168.59	169.47	170.94	203.35	201.37	223.90	161.06	224.31
16.5	36.3	157.88	156.59	157.88	158.26	159.48	169.31	171.08	186.19	188.00	192.06	196.33	174.02	172.37	173.25	174.72	208.42	206.34	225.07	164.33	228.94
17.0	37.4	161.27	159.97	161.27	161.65	162.91	172.79	174.66	189.95	191.84	196.00	200.26	177.81	176.16	177.04	178.51	213.53	211.35	230.14	167.65	233.67
17.5	38.5	164.66	163.35	164.66	165.04	166.34	176.27	178.24	193.73	195.72	200.00	204.38	181.60	179.95	180.83	182.30	218.64	216.36	235.23	170.96	238.40
18.0	39.6	168.05	166.74	168.05	168.43	169.76	179.74	181.81	197.45	199.54	204.00	208.48	185.01	183.36	184.24	185.71	223.75	221.37	240.33	174.27	243.13
18.5	40.7	171.44	170.13	171.44	171.82	173.18	183.21	185.38	201.25	203.44	208.00	212.58	188.32	186.67	187.55	189.02	228.86	226.38	245.42	177.58	247.86
19.0	41.8	174.83	173.52	174.83	175.21	176.60	186.73	188.99	205.00	207.29	212.00	216.72	191.63	189.98	190.86	192.33	233.97	231.39	246.51	180.89	252.59
19.5	42.9	178.22	176.91	178.22	178.60	180.01	190.24	192.60	208.85	211.24	216.00	220.82	195.54	193.89	194.77	196.24	239.10	236.42	251.60	184.20	257.32
20.0	44.0	181.61	180.30	181.61	182.00	183.41	193.74	196.19	213.30	215.84	220.72	225.64	199.45	197.80	198.68	200.15	244.23	241.45	256.69	187.61	262.05
20.5	45.1	185.00	183.69	185.00	185.39	186.81	197.24	199.78	216.93	219.57	224.56	229.58	203.36	201.71	202.59	204.06	249.34	246.46	261.78	190.92	266.78
21.0	46.2	188.39	187.08	188.39	188.78	190.21	200.74	203.38	221.62	224.36	229.44	234.56	207.27	205.62	206.50	207.97	254.45	251.47	266.88	194.23	271.51
21.5	47.3	191.78	190.47	191.78	192.17	193.61	204.24	206.98	223.86	226.70	231.88	237.10	211.18	209.53	210.41	211.88	259.56	256.48	271.97	197.54	276.24
22.0	48.4	195.17	193.86	195.17	195.56	197.01	207.74	210.58	226.20	229.14	234.42	239.74	215.10	213.45	214.33	215.80	264.65	261.47	277.36	200.82	280.97
22.5	49.5	198.56	197.25	198.56	198.95	200.41	211.24	214.18	230.04	233.08	238.46	243.84	219.02	217.37	218.25	219.72	269.74	266.49	282.75	204.13	285.70
23.0	50.6	201.95	200.64	201.95	202.34	203.81	214.84	217.88	233.88	237.02	242.50	248.02	222.94	221.29	222.17	223.64	274.83	271.45	287.54	207.44	290.42
23.5	51.7	205.34	204.03	205.34	205.73	207.21	218.34	221.48	235.42	238.66	244.24	249.86	226.86	225.21	226.09	227.56	279.92	276.44	292.33	210.75	295.15
24.0	52.8	208.73	207.42	208.73	209.12	210.61	221.84	225.08	240.02	243.36	249.04	254.76	230.78	229.13	229.99	231.46	284.91	281.33	297.12	214.06	300.00
24.5	53.9	212.12	210.81	212.12	212.51	214.01	225.64	228.98	244.02	247.46	253.28	259.10	234.70	233.05	233.91	235.38	290.00	286.32	301.91	217.37	304.75
25.0	55.0	215.51	214.20	215.51	215.90	217.41	228.44	231.88	246.66	250.20	256.12	2									

WEIGHT (up to and including)			RATE CODE / PRICE (\$)																						
in (kg) or VE*	in (lb.) or VE*		A1	A2	A3	A4	A5	A6	B1	B2	B3	B4	B5	C1	C2	C3	C4	C5	D1	D2	D3	D4	D5	D6	D7
0.5	1.1		12.05	12.39	11.95	12.33	12.42	13.07	13.25	13.23	13.80	13.78	13.80	13.80	14.48	13.65	14.47	13.76	15.73	15.79	16.84	16.31	17.19	16.34	16.94
0.75	1.7		12.37	12.70	12.36	12.63	12.76	13.39	13.71	13.68	14.15	14.12	14.15	14.22	14.91	13.97	14.90	14.16	16.08	16.11	17.25	16.72	17.61	16.65	17.35
1.0	2.2		14.82	15.00	14.81	15.00	15.05	16.66	17.18	17.16	17.93	17.85	17.94	18.54	19.26	17.62	18.92	17.80	21.61	21.64	23.68	23.66	24.69	22.41	23.56
1.5	3.3		15.89	17.09	15.80	16.23	17.62	17.92	18.14	18.10	18.53	18.44	18.56	19.31	20.53	18.01	19.59	18.65	22.71	22.72	24.91	24.89	26.25	23.50	24.94
2.0	4.4		16.53	17.16	16.45	16.88	18.50	18.83	19.03	18.99	19.38	19.30	19.39	19.71	20.94	18.86	20.47	19.46	23.69	23.69	25.88	25.85	27.20	24.52	26.01
2.5	5.5		17.16	17.51	17.06	17.50	18.79	19.23	19.34	19.32	19.89	19.82	20.01	20.81	22.11	19.46	21.10	20.04	24.31	24.31	26.93	26.90	28.36	25.12	26.67
3.0	6.6		17.54	17.92	17.46	17.91	19.20	19.67	19.78	19.75	20.33	20.24	20.45	21.28	22.60	19.87	21.57	20.49	24.82	24.83	27.52	27.50	28.96	25.67	27.23
3.5	7.7		18.08	18.49	17.99	18.47	19.76	20.28	20.40	20.37	20.94	20.86	21.06	21.91	23.28	20.45	22.22	21.13	25.56	25.59	28.36	28.34	29.87	26.45	28.07
4.0	8.8		18.62	19.03	18.70	19.02	20.46	20.87	21.00	20.96	21.64	21.58	21.79	22.54	23.96	21.15	22.88	21.75	26.43	26.33	29.20	29.18	30.74	27.21	28.88
4.5	9.9		19.17	19.58	19.27	19.57	21.05	21.45	21.58	21.55	22.26	22.17	22.43	23.18	24.65	21.75	23.52	22.38	27.18	27.08	30.06	30.04	31.64	27.99	29.70
5.0	11.0		19.71	20.14	19.81	20.13	21.61	22.06	22.20	22.15	22.87	22.78	23.02	23.83	25.32	22.35	24.19	23.02	27.93	27.80	30.89	30.87	32.50	28.75	30.52
5.5	12.1		20.20	20.66	20.32	20.65	22.14	22.63	22.76	22.75	23.45	23.39	23.63	24.47	26.00	22.92	24.81	23.60	28.66	28.55	31.72	31.70	33.36	29.50	31.32
6.0	13.2		20.73	21.18	20.82	21.17	22.70	23.20	23.34	23.32	24.06	23.97	24.21	25.10	26.66	23.50	25.42	24.18	29.40	29.27	32.50	32.48	34.22	30.23	32.09
6.5	14.3		21.23	21.69	21.32	21.68	23.25	23.75	23.92	23.87	24.65	24.55	24.81	25.71	27.32	24.10	26.05	24.78	30.11	29.99	33.31	33.29	35.07	31.00	32.90
7.0	15.4		21.72	22.18	21.84	22.17	23.77	24.32	24.49	24.46	25.24	25.16	25.40	26.34	27.99	24.67	26.67	25.34	30.82	30.70	34.10	34.08	35.89	31.74	33.66
7.5	16.5		22.22	22.71	22.34	22.70	24.30	24.91	25.07	25.04	25.83	25.72	25.99	26.95	28.64	25.24	27.30	25.94	31.56	31.41	34.90	34.88	36.75	32.48	34.46
8.0	17.6		22.73	23.22	22.83	23.20	24.83	25.46	25.62	25.59	26.40	26.33	26.57	27.57	29.30	25.82	27.89	26.51	32.27	32.11	35.69	35.67	37.59	33.19	35.25
8.5	18.7		23.23	23.73	23.33	23.72	25.37	26.02	26.20	26.15	27.00	26.90	27.14	28.18	29.96	26.40	28.51	27.09	32.98	32.82	36.48	36.46	38.40	33.92	36.02
9.0	19.8		23.72	24.22	23.84	24.21	25.91	26.58	26.75	26.72	27.57	27.46	27.74	28.81	30.61	26.96	29.12	27.65	33.68	33.54	37.27	37.25	39.25	34.66	36.81
9.5	20.9		24.20	24.73	24.31	24.72	26.44	27.15	27.30	27.27	28.14	28.05	28.30	29.42	31.25	27.55	29.74	28.25	34.39	34.24	38.04	38.02	40.05	35.38	37.56
10.0	22.0		24.68	25.23	24.80	25.22	26.95	27.70	27.87	27.84	28.74	28.62	28.89	30.01	31.90	28.10	30.34	28.80	35.09	34.92	38.80	38.78	40.87	36.11	38.32
10.5	23.1		25.16	25.71	25.27	25.70	27.46	28.23	28.41	28.37	29.29	29.16	29.45	30.61	32.54	28.65	30.92	29.35	35.76	35.60	39.56	39.54	41.63	36.80	39.06
11.0	24.2		25.65	26.20	25.74	26.19	27.98	28.76	28.94	28.91	29.84	29.72	30.00	31.21	33.14	29.19	31.50	29.90	36.44	36.27	40.29	40.27	42.42	37.49	39.79
11.5	25.3		26.10	26.69	26.23	26.65	28.46	29.28	29.49	29.45	30.39	30.27	30.54	31.80	33.79	29.72	32.08	30.44	37.09	36.91	41.03	41.01	43.18	38.17	40.51
12.0	26.4		26.56	27.19	26.69	27.15	28.96	29.84	30.03	29.97	30.96	30.80	31.09	32.36	34.40	30.27	32.67	30.98	37.76	37.60	41.76	41.74	43.95	38.86	41.22
12.5	27.5		27.02	27.69	27.17	27.61	29.48	30.37	30.55	30.50	31.50	31.36	31.65	32.96	35.04	30.80	33.26	31.54	38.41	38.25	42.46	42.44	44.69	39.55	41.95
13.0	28.6		27.49	28.18	27.60	28.06	29.96	30.88	31.08	31.04	32.03	31.89	32.19	33.53	35.62	31.35	33.81	32.07	39.07	38.92	43.19	43.17	45.49	40.22	42.67
13.5	29.7		27.96	28.65	28.07	28.53	30.45	31.41	31.62	31.57	32.57	32.44	32.72	34.09	36.23	31.89	34.40	32.61	39.71	39.57	43.91	43.89	46.25	40.90	43.38
14.0	30.8		28.39	29.16	28.53	29.00	30.95	31.92	32.13	32.07	33.11	32.97	33.26	34.67	36.86	32.40	34.94	33.16	40.38	40.21	44.63	44.61	46.99	41.58	44.10
14.5	31.9		28.86	29.61	28.99	29.49	31.42	32.44	32.64	32.59	33.65	33.50	33.84	35.26	37.45	32.94	35.54	33.68	41.01	40.85	45.33	45.31	47.75	42.23	44.81
15.0	33.0		29.32	30.11	29.45	29.94	31.93	32.94	33.17	33.10	34.20	34.04	34.35	35.83	38.05	33.47	36.09	34.20	41.67	41.49	46.04	46.02	48.48	42.89	45.51
15.5	34.1		29.76	30.59	29.89	30.40	32.41	33.46	33.66	33.63	34.73	34.56	34.89	36.37	38.65	33.99	36.64	34.73	42.32	42.12	46.75	46.73	49.21	43.56	46.20
16.0	35.2		31.09	32.02	31.23	31.75	33.91	35.03	35.25	35.19	36.14	36.00	36.32	37.89	40.09	35.39	38.00	36.17	44.19	44.00	48.66	48.64	51.03	45.57	47.90
16.5	36.3		32.22	33.23	32.35	32.91	35.14	36.33	36.54	36.49	37.47	37.35	37.67	39.30	41.56	36.70	39.38	37.50	45.83	45.62	50.45	50.43	52.87	47.23	49.65
17.0	37.4		32.69	33.72	32.85	33.37	35.67	36.86	37.09	37.02	38.02	37.90	38.24	39.88	42.19	37.24	39.98	38.05	46.51	46.30	51.19	51.17	53.66	47.92	50.39
17.5	38.5		33.18	34.20	33.30	33.86	36.16	37.38	37.62	37.56	38.58	38.44	38.78	40.46	42.81	37.78	40.55	38.59	47.16	46.96	51.91	51.89	54.42	48.60	51.10
18.0	39.6		33.61	34.68	33.76	34.34	36.66	37.91	38.14	38.08	39.11	38.97	39.32	41.05	43.41	38.31	41.12	39.12	47.82	47.60	52.64	52.62	55.16	49.29	51.81
18.5	40.7		34.08	35.18	34.25	34.79	37.14	38.43	38.66	38.60	39.68	39.50	39.86	41.62	44.02	38.84	41.69	39.66	48.47	48.27	53.36	53.34	55.91	49.96	52.52
19.0	41.8		34.54	35.68	34.66	35.27	37.64	38.96	39.19	39.12	40.21	40.04	40.40	42.18	44.63	39.35	42.24	40.20	49.12	48.91	54.07	54.05	56.65	50.64	53.23
19.5	42.9		35.00	36.13	35.15	35.73	38.12	39.48	39.71	39.67	40.75	40.58	40.92	42.76	45.23	39.89	42.82	40.72	49.76	49.55	54.77	54.75	57.41	51.29	53.93
20.0	44.0		35.44	36.63	35.61	36.18	38.62	40.00	40.23	40.18	41.27	41.11	41.46	43.32	45.81	40.42	43.38	41.25	50.43	50.18	55.48	55.46	58.15	51.96	54.63
20.5	45.1		35.79	37.02	35.96	36.54	39.01	40.40	40.64	40.58	41.68	41.52	41.89	43.74	46.28	40.84	43.80	41.66	50.93	50.70	56.01	55.99	58.74	52.50	55.17
21.0	46.2		36.16	37.41	36.32	36.91	39.41	40.83	41.08	40.98	42.11	41.94	42.31	44.21	46.74	41.24	44.26	42.08	51.44	51.20	56.60	56.58	59.33	53.01	55.71
21.5	47.3		36.49	37.77	36.66	37.26	39.79	41.23	41.46	41.42	42.53	42.34	42.71	44.64	47.21	41.66	44.67	42.47	51.97	51.71	57.15	57.13	59.89	53.53	56.23
22.0	48.4		36.86	38.34	37.01	37.62	40.18	41.65	41.90	41.82	42.94	42.76	43.13	45.04	47.67	42.07	45.10	42.87	52.46	52.21	57.69	57.67	60.49	54.02	56.80
22.5	49.5		37.55	38.73	37.72	38.33	40.92	42.46	42.71	42.63	43.74	43.56	43.95	45.91	48.58	42.85	45.96	43.69	53.45	53.22	58.78	58.76	61.64	55.09	57.87
23.0	50.6		37.90	39.10	38.07	38.69	41.31	42.85	43.11	43.05	44.17	44.00	44.36	46.34	49.00	43.26	46.40	44.10	53.98	53.70	59.34	59.32	62.22	55.57	

WEIGHT (up to and including)			RATE CODE / PRICE (\$)																					
in (kg) or VE*	in (lb.) or VE*		E1	E2	E3	E4	E5	F1	F2	F3	F4	F5	F6	G1	G2	G3	G4	H1	H2	H3	H4	H5	J1	J2
0.5	1.1	16.83	16.83	16.72	16.83	16.90	19.35	19.55	22.90	23.14	23.34	23.54	19.22	19.04	19.09	19.26	21.69	21.48	26.20	18.03	26.22	19.83	23.22	
0.75	1.7	17.37	17.37	17.26	17.37	17.44	19.83	20.02	23.46	23.71	23.91	24.12	19.74	19.56	19.61	19.78	22.21	22.01	26.84	18.47	26.86	20.21	23.67	
1.0	2.2	24.43	24.43	24.40	24.43	24.45	28.52	28.80	35.13	35.48	36.56	36.92	26.91	26.64	26.70	26.93	31.80	31.50	39.84	25.18	40.46	22.87	24.51	
1.5	3.3	28.91	28.94	28.87	28.91	29.05	33.86	34.20	44.00	44.40	45.75	46.20	35.28	34.95	35.02	35.32	39.70	39.28	48.84	33.02	49.58	25.33	28.46	
2.0	4.4	34.61	34.66	34.58	34.61	34.79	39.02	39.41	48.09	48.58	50.02	50.53	39.59	39.20	39.31	39.64	47.34	46.87	58.61	37.04	58.42	29.49	33.04	
2.5	5.5	37.86	37.91	37.64	37.86	38.03	41.13	41.54	53.63	54.17	55.79	56.35	46.11	45.63	45.75	46.14	51.49	50.97	64.21	43.14	64.05	33.74	37.72	
3.0	6.6	39.38	39.44	39.16	39.38	39.58	42.87	43.30	55.54	56.10	57.80	58.36	49.07	48.57	48.71	49.11	54.88	54.32	68.17	45.91	68.12	40.09	41.04	
3.5	7.7	41.26	41.34	41.01	41.26	41.45	44.98	45.43	57.96	58.54	60.35	60.95	52.44	51.92	52.07	52.51	58.74	58.18	72.73	49.07	72.78	43.74	44.73	
4.0	8.8	43.13	43.18	42.90	43.13	43.35	47.08	47.54	60.37	60.96	62.89	63.52	55.83	55.27	55.42	55.89	62.60	61.98	77.30	52.24	77.44	47.40	48.39	
4.5	9.9	45.00	45.06	44.76	45.00	45.24	49.18	49.66	62.77	63.39	65.42	66.06	59.18	58.60	58.76	59.26	66.46	65.78	81.82	55.38	82.06	51.07	52.07	
5.0	11.0	46.86	46.92	46.59	46.86	47.09	51.25	51.76	65.15	65.80	67.93	68.60	62.53	61.93	62.07	62.62	70.25	69.56	86.32	58.53	86.66	53.92	55.89	
5.5	12.1	48.63	48.71	48.35	48.63	48.87	53.26	53.79	67.42	68.10	70.30	71.01	65.77	65.15	65.30	65.88	73.89	73.17	90.67	61.57	91.09	57.88	62.90	
6.0	13.2	50.41	50.47	50.10	50.41	50.65	55.29	55.84	69.70	70.40	72.70	73.39	69.02	68.35	68.53	69.13	77.51	76.74	94.97	64.60	95.52	61.32	66.61	
6.5	14.3	52.17	52.23	51.85	52.17	52.43	57.28	57.86	71.94	72.66	75.06	75.80	72.25	71.57	71.73	72.37	81.13	80.33	99.27	67.62	99.91	64.72	70.30	
7.0	15.4	53.91	53.99	53.59	53.91	54.17	59.30	59.88	74.18	74.93	77.42	78.17	75.46	74.75	74.93	75.58	84.71	83.89	103.53	70.62	104.31	68.14	73.95	
7.5	16.5	55.65	55.72	55.34	55.65	55.92	61.29	61.89	76.42	77.18	79.75	80.55	78.66	77.91	78.07	78.77	88.30	87.41	107.80	73.62	108.66	71.55	77.59	
8.0	17.6	57.38	57.46	57.05	57.38	57.66	63.26	63.88	78.66	79.42	82.07	82.88	81.85	81.07	81.25	81.97	91.85	90.95	112.05	76.60	113.03	74.93	81.23	
8.5	18.7	59.11	59.19	58.75	59.11	59.38	65.24	65.85	80.87	81.66	84.39	85.23	85.04	84.19	84.40	85.14	95.39	94.44	116.27	79.57	117.33	78.30	84.87	
9.0	19.8	60.84	60.90	60.48	60.84	61.11	67.17	67.84	83.05	83.89	86.70	87.57	88.18	87.32	87.55	88.32	98.92	97.94	120.48	82.52	121.64	81.67	88.50	
9.5	20.9	62.55	62.62	62.18	62.55	62.85	69.14	69.80	85.25	86.10	89.02	89.88	91.33	90.45	90.67	91.46	102.43	101.41	124.64	85.48	125.94	85.05	92.10	
10.0	22.0	64.24	64.32	63.87	64.24	64.57	71.08	71.78	87.45	88.31	91.32	92.20	94.66	93.54	93.78	94.59	105.93	104.89	128.82	88.41	130.20	89.80	96.49	
10.5	23.1	65.88	65.97	65.50	65.88	66.20	72.92	73.64	89.53	90.45	93.48	94.40	97.42	96.49	96.73	97.57	109.32	108.24	132.79	91.19	134.31	95.43	100.12	
11.0	24.2	67.50	67.58	67.10	67.50	67.82	74.77	75.49	91.67	92.56	95.64	96.60	100.40	99.42	99.67	100.53	112.67	111.55	136.74	93.96	138.37	98.94	103.74	
11.5	25.3	69.11	69.20	68.71	69.11	69.44	76.60	77.34	93.75	94.68	97.81	98.78	103.34	102.33	102.59	103.48	116.03	114.87	140.67	96.70	142.40	102.41	107.35	
12.0	26.4	70.72	70.80	70.30	70.72	71.06	78.42	79.19	95.84	96.78	99.96	100.94	106.27	105.25	105.52	106.42	119.35	118.18	144.60	99.47	146.44	105.88	110.94	
12.5	27.5	72.33	72.40	71.92	72.33	72.68	80.23	81.00	97.91	98.88	102.09	103.08	109.19	108.14	108.41	109.35	122.68	121.46	148.49	102.20	150.45	109.33	114.51	
13.0	28.6	73.90	74.01	73.48	73.90	74.26	82.02	82.83	99.99	100.96	104.23	105.26	112.10	111.03	111.30	112.27	125.99	124.74	152.37	104.92	154.45	112.77	118.10	
13.5	29.7	75.49	75.61	75.06	75.49	75.87	83.83	84.62	102.01	103.03	106.35	107.40	115.01	113.87	114.15	115.15	129.27	127.99	156.23	107.63	158.42	116.20	121.65	
14.0	30.8	77.10	77.17	76.62	77.10	77.45	85.60	86.44	104.06	105.09	108.46	109.51	117.89	116.73	117.03	118.04	132.54	131.23	160.07	110.32	162.36	119.65	125.24	
14.5	31.9	78.66	78.76	78.20	78.66	79.02	87.39	88.25	106.12	107.15	110.54	111.62	120.74	119.58	119.87	120.91	135.80	134.45	163.89	113.01	166.32	121.83	128.75	
15.0	33.0	80.20	80.31	79.74	80.20	80.60	89.16	90.03	108.13	109.19	112.65	113.76	123.60	122.42	122.72	123.79	139.07	137.68	167.70	115.68	170.25	122.41	129.56	
15.5	34.1	81.76	81.87	81.29	81.76	82.17	90.92	91.82	110.15	111.22	114.73	115.84	126.46	125.21	125.52	126.62	142.28	140.87	171.52	118.34	174.14	125.69	133.00	
16.0	35.2	83.29	83.40	82.79	83.29	83.71	92.87	93.79	111.80	112.93	116.55	117.70	128.31	127.03	127.34	128.44	148.94	147.44	173.41	120.45	177.14	128.63	140.32	
16.5	36.3	84.77	84.88	84.24	84.77	85.19	94.87	95.79	113.39	114.57	118.30	119.49	129.87	128.57	128.88	129.99	150.53	149.03	175.25	122.29	180.25	131.90	146.97	
17.0	37.4	86.20	86.31	85.64	86.20	86.62	96.99	97.92	115.00	116.19	120.00	121.20	131.44	130.13	130.44	131.54	152.00	150.49	177.30	124.04	182.34	134.11	150.52	
17.5	38.5	87.59	87.70	87.01	87.59	88.01	99.14	100.07	116.71	117.90	122.40	123.60	134.87	133.56	133.87	134.97	154.77	153.06	179.35	125.14	184.43	136.00	154.11	
18.0	39.6	89.04	89.15	88.44	89.04	89.46	101.41	102.34	118.42	119.61	124.00	125.20	136.61	135.30	135.61	136.71	157.14	155.43	181.40	126.03	186.54	137.89	157.63	
18.5	40.7	90.45	90.56	89.84	90.45	90.87	102.80	103.73	120.13	121.32	126.60	127.80	139.51	138.20	138.51	139.61	160.03	158.32	183.45	126.92	188.65	139.78	161.21	
19.0	41.8	91.82	91.93	91.21	91.82	92.24	104.21	105.14	121.64	122.83	128.20	129.40	141.11	139.80	140.11	141.21	162.42	160.30	185.36	127.79	190.76	141.67	164.70	
19.5	42.9	93.16	93.27	92.54	93.16	93.58	105.62	106.55	123.05	124.24	129.60	130.80	142.01	140.70	141.01	142.11	164.31	162.20	188.27	128.66	192.87	143.15	168.24	
20.0	44.0	94.57	94.68	93.94	94.57	94.99	107.03	107.96	124.46	125.65	130.80	132.00	143.91	142.60	142.91	144.01	166.21	164.10	190.18	129.55	194.98	144.61	171.75	
20.5	45.1	95.94	96.05	95.30	95.94	96.36	108.44	109.37	125.87	127.06	132.80	134.00	145.81	144.50	144.81	145.91	168.11	166.00	192.09	130.40	197.09	146.11	176.46	
21.0	46.2	97.27	97.38	96.62	97.27	97.69	109.85	110.78	126.84	128.03	133.60	134.80	147.71	146.40	146.71	147.81	170.01	167.90	193.20	131.29	199.20	147.61	181.15	
21.5	47.3	98.57	98.68	97.91	98.57	98.99	111.26	112.19	127.81	129.00	134.40	135.60	149.61	148.30	148.61	149.71	171.91	169.80	194.31	132.18	201.31	149.11	185.83	
22.0	48.4	99.84	99.95	99.18	99.84	100.26	112.64	113.57	128.78	130.00	135.20	136.40	151.51	150.20	150.51	151.61	173.81	171.70	195.42	133.07	202.42	150.01	190.49	
22.5	49.5	101.09	101.20	100.42	101.09	101.51	114.02	114.95	129.75	131.00	136.00	137.20	153.41	152.10	152.41	153.51	175.71	173.60	196.53	133.96	203.53	150.91	194.16	
23.0	50.6	102.32	102.43	101.64	102.32	102.74	115.39	116.32	130.72	131.90	136.80	138.00	155.31	154.00	154.31	155.41	177.61	175.50	197.64	134.85	204.64	151.81	197.16	
23.5	51.7	103.53	103.64	102.84	103.53	103.95	116.71	117.64	131.69	132.90	137.60	138.80	157.21	155.90	156.21	157.31	178.51	176.40	198.75	135.74	205.75			

Regular Parcel™ prices



WEIGHT (up to and including)

RATE CODE / PRICE (\$)

in (kg) or VE*	in (lb.) or VE*	A1	A2	A3	A4	A5	A6	B1	B2	B3	B4	B5	C1	C2	C3	C4	C5	D1	D2	D3	D4	D5	D6	D7
0.5	1.1	10.91	11.00	10.78	10.98	11.69	12.09	12.80	12.78	13.35	13.31	13.39	13.40	13.72	13.07	13.66	13.31	14.57	14.65	15.66	15.19	15.92	15.09	15.40
0.75	1.7	11.20	11.26	11.16	11.24	12.01	12.39	13.26	13.23	13.68	13.64	13.71	13.79	14.12	13.39	14.07	13.71	15.00	15.01	16.04	15.65	16.39	15.55	15.86
1.0	2.2	12.14	12.37	12.12	12.37	12.81	13.52	14.14	14.10	14.54	14.47	14.61	14.69	15.32	14.08	15.12	14.54	16.75	16.77	17.89	17.48	18.27	17.48	17.95
1.5	3.3	13.01	13.32	12.93	13.29	13.41	14.56	14.96	14.95	15.50	15.44	15.61	15.69	16.47	15.02	16.13	15.55	17.75	17.78	19.01	18.46	19.36	18.52	19.06
2.0	4.4	13.15	13.73	13.06	13.44	13.64	14.84	15.63	15.60	16.14	16.09	16.25	16.34	17.06	15.66	16.79	16.11	18.52	18.53	19.82	19.39	20.31	19.33	19.93
2.5	5.5	13.44	14.26	13.34	13.73	14.37	15.40	16.20	16.18	16.70	16.65	16.82	16.91	17.77	16.21	17.38	16.68	19.50	19.49	20.74	20.15	21.10	20.31	20.88
3.0	6.6	13.81	14.62	13.71	14.11	14.79	15.77	16.63	16.60	17.12	17.05	17.23	17.33	18.23	16.62	17.80	17.09	19.98	20.01	21.28	20.66	21.63	20.84	21.42
3.5	7.7	14.30	15.12	14.20	14.62	15.27	16.26	17.19	17.18	17.68	17.63	17.81	17.91	18.85	17.15	18.40	17.64	20.65	20.69	22.13	21.36	22.41	21.53	22.16
4.0	8.8	14.82	15.64	14.83	15.10	15.89	16.78	17.76	17.74	18.35	18.27	18.46	18.47	19.48	17.79	18.98	18.20	21.42	21.47	22.87	22.08	23.14	22.25	22.88
4.5	9.9	15.29	16.10	15.33	15.61	16.34	17.27	18.32	18.31	18.91	18.84	19.05	19.06	20.11	18.35	19.56	18.75	22.11	22.13	23.61	22.78	23.88	22.94	23.62
5.0	11.0	15.78	16.61	15.81	16.10	16.84	17.76	18.87	18.84	19.47	19.41	19.61	19.62	20.76	18.90	20.13	19.28	22.78	22.81	24.33	23.49	24.61	23.64	24.35
5.5	12.1	16.26	17.09	16.31	16.60	17.33	18.23	19.32	19.30	19.94	19.85	20.07	20.08	21.33	19.45	20.70	19.84	23.41	23.46	25.04	24.17	25.31	24.34	25.06
6.0	13.2	16.73	17.59	16.78	17.10	17.81	18.72	19.87	19.84	20.46	20.39	20.60	20.61	21.92	19.96	21.27	20.36	24.05	24.10	25.74	24.83	26.03	25.00	25.76
6.5	14.3	17.22	18.08	17.25	17.58	18.27	19.18	20.40	20.36	21.01	20.93	21.16	21.17	22.52	20.50	21.83	20.90	24.71	24.75	26.45	25.52	26.74	25.67	26.48
7.0	15.4	17.70	18.55	17.74	18.08	18.74	19.68	20.93	20.90	21.53	21.45	21.70	21.71	23.09	21.00	22.38	21.45	25.36	25.38	27.15	26.20	27.45	26.35	27.19
7.5	16.5	18.17	19.05	18.23	18.55	19.22	20.13	21.47	21.42	22.08	22.00	22.25	22.26	23.67	21.55	22.93	21.96	25.98	26.01	27.85	26.85	28.15	27.01	27.88
8.0	17.6	18.66	19.54	18.70	19.04	19.70	20.59	22.00	21.98	22.63	22.50	22.79	22.80	24.26	22.07	23.51	22.52	26.63	26.65	28.57	27.55	28.83	27.68	28.60
8.5	18.7	19.13	20.02	19.17	19.53	20.17	21.08	22.54	22.50	23.15	23.06	23.33	23.34	24.84	22.60	24.03	22.99	27.25	27.28	29.24	28.20	29.54	28.36	29.30
9.0	19.8	19.59	20.49	19.63	20.03	20.63	21.53	23.07	23.03	23.69	23.58	23.95	23.97	25.41	23.12	24.61	23.53	27.87	27.90	29.94	28.88	30.23	29.02	30.14
9.5	20.9	20.06	20.95	20.11	20.50	21.10	22.00	23.58	23.55	24.19	24.11	24.48	24.50	25.98	23.62	25.14	24.05	28.50	28.54	30.65	29.54	30.92	29.67	30.84
10.0	22.0	20.53	21.43	20.59	20.95	21.56	22.47	24.08	24.06	24.72	24.62	25.01	25.03	26.55	24.14	25.68	24.58	29.10	29.16	31.33	30.19	31.60	30.30	31.50
10.5	23.1	20.98	21.90	21.04	21.42	22.03	22.92	24.63	24.58	25.23	25.16	25.53	25.59	27.13	24.64	26.22	25.09	29.72	29.76	32.01	30.86	32.29	30.97	32.20
11.0	24.2	21.41	22.34	21.48	21.89	22.52	23.39	25.11	25.09	25.76	25.67	26.06	26.11	27.70	25.16	26.78	25.60	30.31	30.38	32.68	31.47	32.98	31.60	32.85
11.5	25.3	21.88	22.81	21.94	22.34	22.99	23.82	25.64	25.60	26.27	26.18	26.59	26.66	28.25	25.66	27.29	26.11	30.91	30.98	33.34	32.10	33.61	32.23	33.50
12.0	26.4	22.32	23.27	22.37	22.81	23.43	24.29	26.15	26.12	26.80	26.67	27.11	27.18	28.82	26.15	27.83	26.64	31.51	31.58	34.00	32.74	34.30	32.85	34.15
12.5	27.5	22.75	23.71	22.81	23.26	23.91	24.74	26.67	26.64	27.31	27.19	27.61	27.70	29.37	26.66	28.36	27.12	32.12	32.16	34.66	33.38	34.95	33.48	34.83
13.0	28.6	23.21	24.16	23.26	23.71	24.37	25.17	27.17	27.14	27.83	27.68	28.13	28.21	29.93	27.14	28.89	27.63	32.70	32.77	35.32	33.99	35.60	34.08	35.46
13.5	29.7	23.64	24.59	23.70	24.16	24.85	25.63	27.69	27.62	28.32	28.19	28.64	28.74	30.47	27.66	29.42	28.12	33.27	33.34	35.95	34.62	36.25	34.70	36.10
14.0	30.8	24.07	25.05	24.14	24.58	25.28	26.06	28.17	28.13	28.83	28.69	29.14	29.25	31.01	28.13	29.94	28.64	33.87	33.94	36.60	35.21	36.89	35.34	36.74
14.5	31.9	24.50	25.48	24.56	25.04	25.74	26.53	28.68	28.62	29.32	29.21	29.65	29.76	31.57	28.65	30.46	29.11	34.43	34.52	37.26	35.83	37.55	35.95	37.39
15.0	33.0	24.95	25.93	25.00	25.47	26.22	26.94	29.17	29.11	29.83	29.70	30.15	30.28	32.11	29.12	30.97	29.62	35.02	35.09	37.90	36.44	38.18	36.55	38.03
15.5	34.1	25.37	26.37	25.42	25.92	26.66	27.40	29.68	29.63	30.32	30.21	30.67	30.80	32.68	29.63	31.49	30.11	35.59	35.68	38.55	37.05	38.84	37.16	38.67
16.0	35.2	26.57	27.62	26.62	27.13	27.95	28.70	31.09	31.06	31.63	31.47	31.98	32.14	33.91	30.89	32.70	31.41	37.25	37.16	40.19	38.64	40.34	38.77	40.15
16.5	36.3	27.57	28.67	27.64	28.14	29.03	29.77	32.28	32.23	32.81	32.67	33.16	33.34	35.19	32.05	33.91	32.57	38.64	38.53	41.72	40.11	41.84	40.21	41.65
17.0	37.4	28.02	29.14	28.09	28.61	29.48	30.20	32.79	32.74	33.33	33.17	33.69	33.87	35.74	32.55	34.44	33.10	39.25	39.12	42.39	40.72	42.50	40.84	42.29
17.5	38.5	28.44	29.59	28.51	29.06	29.96	30.68	33.28	33.23	33.83	33.70	34.21	34.38	36.28	33.06	34.97	33.57	39.81	39.73	43.04	41.36	43.16	41.47	42.95
18.0	39.6	28.91	30.02	28.95	29.51	30.42	31.10	33.81	33.76	34.33	34.20	34.71	34.91	36.88	33.54	35.50	34.08	40.40	40.32	43.68	41.98	43.82	42.08	43.59
18.5	40.7	29.36	30.45	29.41	29.95	30.89	31.56	34.31	34.23	34.86	34.69	35.23	35.43	37.42	34.03	36.01	34.59	41.02	40.90	44.33	42.59	44.46	42.70	44.23
19.0	41.8	29.76	30.91	29.83	30.39	31.34	31.99	34.82	34.75	35.36	35.19	35.74	35.95	37.95	34.54	36.54	35.07	41.60	41.47	44.97	43.23	45.12	43.31	44.86
19.5	42.9	30.19	31.35	30.28	30.83	31.78	32.46	35.30	35.26	35.83	35.71	36.26	36.47	38.49	35.03	37.05	35.57	42.17	42.07	45.61	43.84	45.76	43.92	45.51
20.0	44.0	30.63	31.79	30.69	31.28	32.26	32.89	35.81	35.74	36.34	36.19	36.75	36.99	39.03	35.51	37.58	36.05	42.75	42.64	46.27	44.42	46.39	44.54	46.15
20.5	45.1	31.05	32.19	31.14	31.72	32.63	33.28	36.13	36.09	36.69	36.54	37.10	37.42	39.50	35.84	37.95	36.41	43.24	43.13	46.79	44.96	46.93	45.05	46.66
21.0	46.2	31.49	32.57	31.53	32.12	32.99	33.66	36.47	36.41	37.01	36.84	37.43	37.83	39.92	36.15	38.29	36.77	43.72	43.63	47.33	45.45	47.45	45.56	47.20
21.5	47.3	31.88	32.93	31.97	32.55	33.44	34.03	36.79	36.73	37.35	37.20	37.78	38.26	40.37	36.48	38.61	37.12	44.20	44.08	47.84	45.93	47.99	46.06	47.72
22.0	48.4	32.30	33.48	32.36	32.98	33.68	34.41	37.12	37.04	37.69	37.52	38.12	38.68	40.83	36.78	38.97	37.46	44.69	44.56	48.37	46.45	48.49	46.56	48.24
22.5	49.5	33.01	34.17	33.10	33.71	34.37	35.11	37.78	37.73	38.37	38.22	38.80	39.47	41.65	37.46	39.67	38.17	45.59	45.48	49.36	47.39	49.49	47.48	49.21
23.0	50.6	33.42	34.56	33.50	34.12	34.72	35.49	38.11	38.04	38.71	38.54	39.15	39.89	42.10	37.77	40.02	38.50	46.06	45.96	49.86	47.89	50.00	47.99	49.71
23.5	51.7	33.83	34.95	33.90	34.55	35.07	35.88	38.44	38.37	39.00														

Regular Parcel™ prices



WEIGHT (up to and including)

RATE CODE / PRICE (\$)

in (kg) or VE*	in (lb.) or VE*	E1	E2	E3	E4	E5	F1	F2	F3	F4	F5	F6	G1	G2	G3	G4	H1	H2	H3	H4	H5	J1	J2
0.5	1.1	14.82	14.85	14.75	14.95	15.03	15.85	16.01	17.79	17.98	18.33	18.51	16.98	16.83	16.86	17.01	18.31	18.12	20.56	15.76	20.60	16.16	18.87
0.75	1.7	15.30	15.33	15.22	15.32	15.41	16.33	16.49	18.33	18.52	18.89	19.06	17.45	17.28	17.31	17.48	18.87	18.67	21.16	16.16	21.21	16.56	19.34
1.0	2.2	17.22	17.26	17.16	17.24	17.34	17.87	18.04	21.73	21.93	22.38	22.60	19.03	18.86	18.92	19.08	20.65	20.46	24.22	17.68	24.16	18.61	20.58
1.5	3.3	18.29	18.34	18.21	18.30	18.39	19.46	19.66	22.55	22.74	23.23	23.44	20.67	20.47	20.51	20.69	22.49	22.27	26.59	19.18	26.54	20.18	23.60
2.0	4.4	19.28	19.32	19.20	19.28	19.36	20.43	20.63	23.58	23.81	24.27	24.50	21.76	21.54	21.63	21.77	23.70	23.48	27.89	20.21	28.49	23.50	27.48
2.5	5.5	20.17	20.19	20.08	20.17	20.28	21.07	21.28	24.92	25.15	25.67	25.92	22.40	22.21	22.25	22.43	24.69	24.45	29.23	20.81	29.88	26.91	31.47
3.0	6.6	20.69	20.71	20.61	20.69	20.78	21.66	21.85	25.49	25.74	26.26	26.50	23.16	22.95	23.00	23.20	25.46	25.22	30.14	21.52	30.84	32.19	34.20
3.5	7.7	21.40	21.47	21.31	21.41	21.53	22.42	22.63	26.33	26.59	27.09	27.36	24.16	23.93	23.98	24.19	26.50	26.24	31.35	22.44	32.08	34.79	37.23
4.0	8.8	22.22	22.27	22.14	22.23	22.35	23.18	23.40	27.14	27.40	27.92	28.19	25.25	25.00	25.06	25.28	27.51	27.24	32.55	23.33	33.30	37.38	40.23
4.5	9.9	22.93	22.98	22.84	22.94	23.07	23.94	24.16	27.96	28.22	28.77	29.04	26.21	25.96	26.02	26.24	28.52	28.23	33.69	24.23	34.53	39.94	43.24
5.0	11.0	23.66	23.67	23.56	23.67	23.75	24.69	24.92	28.80	29.07	29.57	29.86	27.16	26.90	26.98	27.21	29.51	29.22	34.88	25.10	35.73	42.50	46.25
5.5	12.1	24.35	24.40	24.26	24.37	24.48	25.43	25.67	29.57	29.85	30.41	30.67	28.07	27.81	27.88	28.11	30.51	30.21	35.98	25.95	36.91	45.84	52.48
6.0	13.2	25.06	25.09	24.95	25.08	25.19	26.14	26.39	30.34	30.63	31.19	31.49	28.97	28.71	28.77	29.03	31.49	31.18	37.10	26.77	38.04	48.34	55.48
6.5	14.3	25.75	25.80	25.66	25.77	25.91	26.85	27.11	31.13	31.43	31.98	32.30	29.89	29.60	29.66	29.93	32.46	32.14	38.19	27.61	39.20	50.82	58.49
7.0	15.4	26.45	26.49	26.34	26.47	26.61	27.57	27.84	31.89	32.21	32.81	33.12	30.76	30.47	30.55	30.81	33.44	33.12	39.30	28.44	40.34	53.29	61.49
7.5	16.5	27.14	27.19	27.05	27.16	27.31	28.27	28.56	32.65	32.97	33.58	33.89	31.65	31.36	31.43	31.69	34.39	34.08	40.39	29.27	41.49	55.74	64.48
8.0	17.6	27.85	27.89	27.73	27.86	27.99	28.96	29.25	33.43	33.75	34.37	34.69	32.53	32.23	32.31	32.58	35.36	35.00	41.46	30.08	42.60	58.21	67.46
8.5	18.7	28.54	28.57	28.40	28.55	28.67	29.69	29.96	34.17	34.53	35.16	35.49	33.41	33.09	33.18	33.47	36.33	35.97	42.54	30.87	43.72	60.67	70.42
9.0	19.8	29.20	29.24	29.11	29.21	29.36	30.41	30.67	34.93	35.29	35.94	36.29	34.28	33.97	34.04	34.34	37.28	36.92	43.62	31.69	44.84	63.11	73.38
9.5	20.9	29.90	29.94	29.78	29.91	30.05	31.11	31.41	35.69	36.03	36.70	37.05	35.16	34.83	34.92	35.21	38.21	37.85	44.70	32.50	45.95	65.55	76.34
10.0	22.0	30.56	30.61	30.44	30.57	30.73	31.79	32.10	36.43	36.78	37.48	37.85	36.03	35.70	35.77	36.10	39.16	38.78	45.75	33.30	47.06	67.99	79.26
10.5	23.1	31.24	31.29	31.13	31.25	31.42	32.49	32.82	37.19	37.57	38.28	38.63	36.90	36.54	36.66	36.96	40.10	39.73	46.84	34.10	48.18	70.43	82.23
11.0	24.2	31.90	31.94	31.77	31.91	32.08	33.18	33.50	37.94	38.31	39.04	39.40	37.76	37.41	37.50	37.81	41.05	40.65	47.90	34.91	49.29	72.84	85.14
11.5	25.3	32.56	32.61	32.43	32.57	32.72	33.86	34.18	38.68	39.05	39.81	40.18	38.62	38.25	38.36	38.68	41.96	41.58	48.93	35.70	50.37	75.24	88.06
12.0	26.4	33.21	33.27	33.06	33.22	33.37	34.55	34.88	39.40	39.81	40.57	40.94	39.47	39.10	39.19	39.54	42.91	42.50	50.00	36.48	51.45	77.64	90.97
12.5	27.5	33.86	33.90	33.70	33.87	34.03	35.21	35.56	40.15	40.54	41.31	41.70	40.32	39.93	40.03	40.38	43.84	43.41	51.03	37.25	52.55	80.04	93.85
13.0	28.6	34.50	34.56	34.36	34.51	34.68	35.91	36.24	40.89	41.28	42.08	42.49	41.15	40.76	40.87	41.22	44.75	44.31	52.08	38.03	53.63	82.40	96.73
13.5	29.7	35.16	35.20	34.99	35.17	35.33	36.59	36.93	41.61	41.99	42.83	43.24	42.00	41.62	41.71	42.08	45.66	45.24	53.11	38.81	54.70	84.79	99.62
14.0	30.8	35.80	35.86	35.64	35.81	35.98	37.24	37.60	42.33	42.75	43.56	43.97	42.84	42.43	42.56	42.89	46.57	46.11	54.13	39.60	55.78	87.16	102.45
14.5	31.9	36.42	36.48	36.28	36.43	36.63	37.91	38.28	43.06	43.49	44.30	44.74	43.67	43.26	43.35	43.75	47.46	47.03	55.16	40.37	56.83	89.50	105.34
15.0	33.0	37.05	37.12	37.05	37.06	37.26	38.58	38.94	43.78	44.19	45.05	45.50	44.48	44.09	44.18	44.59	48.39	47.91	56.18	41.12	57.89	91.87	108.17
15.5	34.1	37.70	37.76	37.70	37.71	37.91	39.23	39.60	44.50	44.93	45.80	46.24	45.34	44.91	45.03	45.40	49.30	48.80	57.20	41.91	58.98	94.21	111.01
16.0	35.2	39.24	39.30	39.24	39.25	39.44	40.85	41.22	46.28	46.71	47.64	48.10	47.46	47.04	47.14	47.56	51.38	50.86	59.59	43.87	61.44	99.31	117.11
16.5	36.3	40.73	40.80	40.73	40.74	40.93	42.41	42.80	47.99	48.46	49.42	49.88	49.37	48.87	49.00	49.43	53.40	52.88	61.90	45.61	63.82	103.85	122.56
17.0	37.4	41.38	41.46	41.38	41.39	41.60	43.07	43.48	48.72	49.19	50.17	50.65	50.19	49.72	49.85	50.29	54.34	53.79	62.93	46.39	64.92	106.30	125.51
17.5	38.5	42.03	42.10	42.03	42.04	42.23	43.76	44.17	49.46	49.92	50.92	51.40	51.05	50.57	50.69	51.12	55.24	54.69	63.99	47.19	66.00	108.73	128.44
18.0	39.6	42.68	42.72	42.68	42.69	42.89	44.43	44.85	50.20	50.67	51.65	52.18	51.89	51.43	51.54	52.00	56.16	55.63	65.01	47.96	67.09	111.14	131.39
18.5	40.7	43.31	43.37	43.31	43.32	43.53	45.10	45.54	50.92	51.38	52.42	52.91	52.75	52.24	52.37	52.81	57.07	56.52	66.06	48.73	68.15	113.56	134.30
19.0	41.8	43.96	44.01	43.96	43.97	44.18	45.77	46.19	51.62	52.12	53.17	53.67	53.58	53.07	53.20	53.66	57.99	57.42	67.09	49.51	69.21	115.97	137.21
19.5	42.9	44.59	44.65	44.59	44.60	44.81	46.41	46.87	52.34	52.85	53.91	54.41	54.40	53.91	54.01	54.49	58.89	58.31	68.11	50.30	70.27	118.36	140.10
20.0	44.0	45.22	45.29	45.22	45.23	45.46	47.09	47.53	53.06	53.57	54.64	55.16	55.24	54.72	54.86	55.31	59.77	59.19	69.13	51.07	71.33	120.75	142.98
20.5	45.1	45.74	45.81	45.74	45.75	45.95	47.62	48.07	53.69	54.22	55.28	55.80	55.95	55.42	55.55	56.02	60.52	59.97	70.03	51.72	72.27	124.96	147.09
21.0	46.2	46.25	46.31	46.25	46.26	46.50	48.14	48.59	54.31	54.83	55.90	56.43	56.64	56.10	56.27	56.71	61.29	60.70	70.92	52.33	73.18	129.14	151.18
21.5	47.3	46.76	46.81	46.76	46.77	46.99	48.67	49.14	54.93	55.44	56.52	57.05	57.32	56.77	56.91	57.38	62.04	61.43	71.82	52.97	74.09	133.35	155.25
22.0	48.4	47.26	47.31	47.25	47.27	47.48	49.18	49.65	55.52	56.06	57.13	57.69	58.01	57.48	57.60	58.09	62.79	62.16	72.71	53.61	75.00	137.49	159.28
22.5	49.5	48.22	48.26	48.22	48.23	48.46	50.18	50.67	56.65	57.22	58.31	58.87	59.26	58.69	59.09	59.32	64.10	63.49	74.32	54.77	76.62	141.65	164.13
23.0	50.6	48.72	48.77	48.72	48.73	48.96	50.69	51.17	57.28	57.82	58.92	59.49	59.93	59.37	59.79	60.00	64.85	64.22	75.19	55.38	77.54	145.77	168.19
23.5	51.7	49.22	49.27	49.22	49.23	49.46	51.21	51.71	57.87	58.42	59.54	60.10	60.60	60.03	60.46	60.69	65.58	64.96	76.08	56.01	78.44	149.90	172.20
24.0	52.8	49.70	49.79	49.70	49.71	49.96	51.73	52.22	58.50	59.04	60.13	60.71	61.27	60.73	61.14	61.37	66.32	65.68	76.96	56.64	79.33	154.03	176.22
24.5	53.9	50.21	50.25	50.21	50.22																		

Speed

- Local – 2 days
- Provincial – 3 days
- National – 4 days

NOTE: These delivery standards are not guaranteed.

Features, options and surcharge prices

CATEGORY	PRICES
Forward Under Cover	Items containing Lettermail for forwarding by Postmaster – Applicable Lettermail postage. Items being forwarded – Applicable Lettermail postage.
Government Mail Free of Postage	No charge.
Mail Forwarding	Item for which a Mail Forwarding request has been purchased: No additional fee.
Return to Sender	Items bearing a return address: No charge. Items with a return address inside the item: \$0.99
Registered Mail™	\$10.50 plus applicable Lettermail postage.
Signature	No additional fees.
Signature Hard Copy (Advice of Receipt)	After mailing: \$7.25
Liability Coverage*	Included (up to \$100).
Additional Liability Coverage*	\$2.75 per \$100 (up to a maximum of \$5,000).
Return to Sender	No additional fees.
Mail Forwarding	No additional fees.
Proof of Mailing	No additional fees.
Delivery Confirmation (Tracking)	No additional fees.
Card (Hold) for Pickup (contract customers only)	No additional fees.
Deficient Postage Fee	\$0.99 plus the amount of deficient postage.

* Some conditions and exceptions apply.

Lettermail pricing table

STANDARD (ENVELOPES, CARDS AND SELF-MAILERS)	0-30 G		30-50 G		
Single stamp	\$1.15		\$1.40		
Stamps in booklets/coils/panes	\$0.99		\$1.40		

OTHER (NON-STANDARD AND OVERSIZE)	0-100 G	100-200 G	200-300 G	300-400 G	400-500 G
Stamps	\$2.09	\$3.43	\$4.78	\$5.48	\$5.89

NOTE: Standard square envelopes are acceptable (minimum size of 140 mm x 140 mm x 0.18 mm and maximum size of 156 mm x 156 mm x 5 mm). Items that are missing or have an incorrect postal code must be paid at the other Lettermail prices. Envelopes must be sealed. Unsealed items such as brochures, fanfolds and newsletters, must be paid at the other Lettermail prices.

The Permanent™ stamp is a non-denominated stamp with a postage value of \$0.99.



United States

Features, options and other surcharges: Shipping to U.S. destinations



For more information, refer to your *Parcel Services Customer Guide* or the *Canada Postal Guide* at canadapost.ca/postalservices.

PARCEL SERVICES: UNITED STATES				
FEATURES AND OPTIONS	XPRESSPOST™ – USA	EXPEDITED PARCEL™ – USA	TRACKED PACKET™ – USA	SMALL PACKET™ USA – AIR
Tracking and delivery				
On-Time Delivery Guarantee	✓			
Tracking and Delivery Confirmation	✓	✓	✓	
Delivery Updates	✓	✓	✓	
Reference Number Tracking	✓	✓	✓	
Delivery to a Post Office Box	✓	✓	✓	✓
Coverage options				
Liability Coverage (up to \$100)	✓	✓	✓	
Additional Liability Coverage (up to \$1,000)	\$2.75 per \$100			
Signature				
Signature	◆			
Pickup Services				
Recurring (Scheduled) Pickup ¹	Free with \$15,000 or more of annual parcel shipping purchases per pickup location \$7.50 per week with \$2,500 to \$14,999 of the same purchases per pickup location			
One-Time On-Demand Pickup ²	\$3.50			
Third-Party Recurring (Scheduled) Pickup ¹	\$7.50 per week per additional address			
One-Time Third-Party On-Demand Pickup ²	\$3.50			
Redirection Service				
Package Redirection ³	\$13.00	\$13.00	\$13.00	
Customs clearance				
Postal Presentation and Handling	✓	✓	✓	✓
Other services and charges				
Mailing tube surcharge	\$2.00	\$2.00		
Additional handling surcharge ^{4,5} (for oversized item, if length, width or height exceeds 1 m; and unpackaged item)	\$21.00	\$21.00		
Manual document surcharge	\$2.00	\$2.00	\$2.00	\$2.00
Fuel surcharge may apply	Visit canadapost.ca/fuelsurcharge			
Non-transmitted order surcharge	\$25.00	\$25.00	\$25.00	\$25.00
Non-manifested item surcharge	\$2.00	\$2.00	\$2.00	\$2.00
Barcode label correction fee	\$7.00	\$7.00	\$7.00	\$7.00
Suspended order surcharge	\$25.00	\$25.00	\$25.00	\$25.00
Out-of-spec surcharge ⁶	\$300.00	\$300.00		

✓ Feature included in the service (no additional charge).

◆ Signatory name is automatically included at no additional charge and is provided when available.

1. Visit canadapost.ca/pickup to see where Canada Post offers Pickup Services or to request a pickup.
2. One-Time On-Demand Pickup is free when customers have an active subscription to the Recurring (Scheduled) Pickup service. Visit canadapost.ca/pickup to see where Canada Post offers Pickup Services or to request a pickup.
3. The fee for Package Redirection is per package. Shipping costs to the new destination address also apply. Payment will apply upon successful redirection. Package Redirection is eligible for tracked Canada Post U.S.-bound items up until they are processed in an exchange office. View the [terms and conditions](#) including eligibility requirements.
4. The unpackaged item and oversized item surcharges will not be combined. Customers mailing unpackaged items that are also oversized will only be charged a single fee. For more details, see section 6.7 in the *Parcel Services Customer Guide*.
5. For an oversized item, some exceptions may apply. Refer to the international destination listing at canadapost.ca/postalguide.
6. For an item that exceeds our maximum size or weight specifications (any dimension over 2 m; length and girth combined over 3 m; weight over 30 kg).

NOTE: All options must be selected at the time of shipping. Exceptions and conditions apply. Visit canadapost.ca/postalguide.

™ Trademark of Canada Post Corporation.

DESTINATION		ORIGIN ZONE / RATE CODE			
STATE	CODE	A	B	C	D
Alabama	AL	5	4	6	7
Alaska	AK	7	7	7	7
American Samoa	AS	7	7	7	7
Arizona	AZ	7	6	4	7
Arkansas	AR	5	4	5	7
Armed Forces Africa	AE	2	1	7	6
Armed Forces Americas (except Canada)	AA	5	5	7	7
Armed Forces Canada	AE	2	1	7	6
Armed Forces Europe	AE	2	1	7	6
Armed Forces Middle East	AE	2	1	7	6
Armed Forces Pacific	AP	7	7	4	7
California	CA	7	7	4	7
Colorado	CO	6	6	3	6
Connecticut	CT	2	2	7	6
Delaware	DE	3	2	7	6
District of Columbia	DC	3	2	7	6
Florida	FL	5	5	7	7
Georgia	GA	4	4	6	7
Guam	GU	7	7	7	7
Hawaii	HI	7	7	7	7
Idaho	ID	7	6	2	5
Illinois	IL	4	3	5	6
Indiana	IN	4	3	5	6
Iowa	IA	5	4	3	6
Kansas	KS	5	5	4	6
Kentucky	KY	4	3	6	6
Louisiana	LA	5	5	6	7
Maine	ME	1	3	7	5
Marshall Islands	MH	7	7	7	7
Maryland	MD	3	2	7	6
Massachusetts	MA	2	2	7	5
Michigan	MI	3	3	5	5
Micronesia	FM	7	7	7	7
Minnesota	MN	5	4	2	5
Minor Outlying Islands	UM	7	7	7	7
Mississippi	MS	5	4	6	7
Missouri	MO	5	4	5	6
Montana	MT	6	6	1	5
Nebraska	NE	5	5	3	6
Nevada	NV	7	7	3	6
New Hampshire	NH	1	3	7	5
New Jersey	NJ	3	2	7	6
New Mexico	NM	6	6	4	7
New York	NY	2	1	7	6
North Carolina	NC	4	3	7	7
North Dakota	ND	5	5	1	5
Northern Mariana Islands	MP	7	7	7	7
Ohio	OH	3	2	6	6
Oklahoma	OK	5	5	5	7
Oregon	OR	7	7	2	5
Palau	PW	7	7	7	7
Pennsylvania	PA	3	1	6	6
Puerto Rico	PR	7	7	7	7
Rhode Island	RI	2	2	7	6
South Carolina	SC	4	4	7	7
South Dakota	SD	5	5	2	5
Tennessee	TN	4	3	6	7
Texas	TX	6	5	5	7
Utah	UT	7	6	3	6
Vermont	VT	1	2	7	5
Virginia	VA	3	3	7	6
Virgin Islands	VI	7	7	7	7
Washington	WA	7	7	1	5
West Virginia	WV	3	2	6	6
Wisconsin	WI	4	3	3	5
Wyoming	WY	6	6	2	5

HOW TO DETERMINE YOUR SHIPMENT COST

1. To determine the origin zone, locate your origin province (A, B, C or D).
A: Newfoundland and Labrador, Nova Scotia, Prince Edward Island, New Brunswick.
B: Quebec, Ontario.
C: Manitoba, Saskatchewan, Alberta, British Columbia.
D: Yukon, Northwest Territories, Nunavut.
2. Locate the destination state of your item.
3. Locate the rate code under the appropriate origin zone.
4. Use the rate code and the weight of the item to determine the shipment price, using the product specific price sheet.

™ Trademark of Canada Post Corporation.

Xpresspost™ – USA prices



WEIGHT (up to and including)		RATE CODE / PRICE (\$)						
in (kg) or VE*	in (lb.) or VE*	1	2	3	4	5	6	7
0.5	1.1	29.27	29.56	29.85	30.13	30.42	30.70	31.00
1.0	2.2	36.62	37.45	38.44	39.29	40.49	41.51	42.74
1.5	3.3	38.07	39.11	41.30	42.28	42.84	43.76	45.05
2.0	4.4	40.86	41.94	44.04	45.09	46.21	47.52	48.72
2.5	5.5	43.18	44.50	47.33	48.46	49.35	50.62	52.08
3.0	6.6	46.09	47.06	51.04	52.32	55.22	56.69	58.23
3.5	7.7	50.50	51.77	54.12	55.53	59.44	60.95	62.57
4.0	8.8	54.41	55.97	57.01	58.19	61.14	62.66	64.43
4.5	9.9	57.37	58.78	61.00	62.24	65.59	67.23	69.17
5.0	11.0	60.21	61.86	63.01	64.46	68.39	70.11	72.04
5.5	12.1	63.82	65.69	68.26	69.20	74.54	76.33	78.42
6.0	13.2	66.13	68.14	70.28	71.35	78.18	80.23	82.47
6.5	14.3	68.54	70.64	73.51	74.47	81.89	83.94	86.20
7.0	15.4	72.03	73.91	76.56	77.59	86.43	88.57	90.91
7.5	16.5	75.25	77.48	79.67	80.66	90.23	92.51	94.99
8.0	17.6	78.63	80.74	82.60	83.70	94.58	96.96	99.64
8.5	18.7	81.94	83.80	84.72	85.93	98.29	100.67	103.56
9.0	19.8	83.29	85.33	86.31	87.52	101.98	104.68	107.46
9.5	20.9	86.48	88.90	89.95	91.25	105.43	108.19	110.95
10.0	22.0	90.21	92.35	93.47	94.48	110.66	113.55	116.59
10.5	23.1	95.31	97.28	98.49	99.40	117.22	120.20	123.44
11.0	24.2	98.86	100.23	101.51	102.30	120.20	123.36	126.62
11.5	25.3	100.79	102.32	103.64	104.58	123.15	126.29	129.42
12.0	26.4	102.33	104.75	106.14	107.16	125.87	128.99	132.43
12.5	27.5	104.76	107.18	108.83	109.74	128.97	132.09	135.61
13.0	28.6	106.17	108.75	110.91	111.91	131.98	135.21	138.78
13.5	29.7	108.23	110.74	113.30	114.08	134.95	138.31	142.21
14.0	30.8	110.03	112.99	116.62	117.54	137.54	140.83	144.57
14.5	31.9	112.90	114.98	118.63	120.25	141.27	144.65	148.52
15.0	33.0	117.90	120.21	124.52	126.25	144.93	148.60	152.53
15.5	34.1	123.78	125.88	129.55	131.43	149.59	154.58	157.20
16.0	35.2	125.72	127.68	132.27	133.58	152.35	157.80	160.39
16.5	36.3	127.88	130.36	135.67	136.87	157.28	162.66	165.53
17.0	37.4	132.35	135.02	140.02	140.99	162.08	167.68	170.56
17.5	38.5	137.02	139.73	142.98	144.28	167.01	172.82	175.72
18.0	39.6	141.57	144.50	146.14	147.38	171.55	177.51	180.58
18.5	40.7	146.14	148.21	149.71	151.12	176.55	182.64	185.79
19.0	41.8	149.32	151.23	152.45	153.78	181.34	187.48	190.83
19.5	42.9	151.21	154.31	156.61	158.08	186.23	192.74	195.81
20.0	44.0	152.96	156.53	162.20	163.57	191.00	197.42	200.83
20.5	45.1	157.74	160.67	163.01	166.75	193.97	202.46	203.97
21.0	46.2	162.43	165.27	168.31	172.09	198.58	207.51	209.07
21.5	47.3	166.94	169.93	173.49	177.36	203.43	212.34	213.97
22.0	48.4	169.50	172.61	176.65	180.54	208.31	217.47	219.26
22.5	49.5	171.94	175.01	179.74	183.70	213.05	222.43	224.21
23.0	50.6	174.39	177.79	184.88	189.03	217.71	227.35	229.13
23.5	51.7	176.88	180.30	187.97	192.15	222.71	232.37	234.18
24.0	52.8	180.72	184.02	191.25	195.45	227.49	237.40	239.28
24.5	53.9	183.20	186.53	196.32	200.66	232.15	242.39	244.30
25.0	55.0	187.39	190.35	200.41	204.81	235.89	246.38	248.32
25.5	56.1	191.55	195.92	205.44	209.95	241.84	250.27	254.56
26.0	57.2	194.68	198.01	208.58	213.34	245.81	254.10	258.46
26.5	58.3	198.19	201.59	211.89	216.51	248.63	257.17	261.63
27.0	59.4	200.72	204.06	214.86	219.59	250.59	259.14	263.73
27.5	60.5	203.82	207.40	218.24	222.84	252.42	261.10	265.59
28.0	61.6	206.11	209.82	221.09	226.02	254.20	262.99	267.47
28.5	62.7	209.90	213.61	224.36	229.40	256.46	265.11	269.58
29.0	63.8	214.42	218.23	227.43	232.45	258.16	266.88	271.48
29.5	64.9	219.16	223.14	230.66	235.77	260.12	269.07	273.59
30.0	66.0	221.46	225.60	233.68	238.89	263.97	272.75	277.47
		4.65	4.72	4.92	5.18	5.47	5.58	5.71

FOR VOLUMETRIC EQUIVALENT (VE)* OVER 30 – ADD PER 0.5

™ Trademark of Canada Post Corporation.

*For more information, refer to your Parcel Services Customer Guide or the Canada Postal Guide at canadapost.ca/postalservices.

Expedited Parcel™ – USA prices



DESTINATION		ORIGIN ZONE / RATE CODE			
STATE	CODE	A	B	C	D
Alabama	AL	5	4	6	7
Alaska	AK	7	7	7	7
American Samoa	AS	7	7	7	7
Arizona	AZ	7	6	4	7
Arkansas	AR	5	4	5	7
Armed Forces Africa	AE	2	1	7	6
Armed Forces Americas (except Canada)	AA	5	5	7	7
Armed Forces Canada	AE	2	1	7	6
Armed Forces Europe	AE	2	1	7	6
Armed Forces Middle East	AE	2	1	7	6
Armed Forces Pacific	AP	7	7	4	7
California	CA	7	7	4	7
Colorado	CO	6	6	3	6
Connecticut	CT	2	2	7	6
Delaware	DE	3	2	7	6
District of Columbia	DC	3	2	7	6
Florida	FL	5	5	7	7
Georgia	GA	4	4	6	7
Guam	GU	7	7	7	7
Hawaii	HI	7	7	7	7
Idaho	ID	7	6	2	5
Illinois	IL	4	3	5	6
Indiana	IN	4	3	5	6
Iowa	IA	5	4	3	6
Kansas	KS	5	5	4	6
Kentucky	KY	4	3	6	6
Louisiana	LA	5	5	6	7
Maine	ME	1	3	7	5
Marshall Islands	MH	7	7	7	7
Maryland	MD	3	2	7	6
Massachusetts	MA	2	2	7	5
Michigan	MI	3	3	5	5
Micronesia	FM	7	7	7	7
Minnesota	MN	5	4	2	5
Minor Outlying Islands	UM	7	7	7	7
Mississippi	MS	5	4	6	7
Missouri	MO	5	4	5	6
Montana	MT	6	6	1	5
Nebraska	NE	5	5	3	6
Nevada	NV	7	7	3	6
New Hampshire	NH	1	3	7	5
New Jersey	NJ	3	2	7	6
New Mexico	NM	6	6	4	7
New York	NY	2	1	7	6
North Carolina	NC	4	3	7	7
North Dakota	ND	5	5	1	5
Northern Mariana Islands	MP	7	7	7	7
Ohio	OH	3	2	6	6
Oklahoma	OK	5	5	5	7
Oregon	OR	7	7	2	5
Palau	PW	7	7	7	7
Pennsylvania	PA	3	1	6	6
Puerto Rico	PR	7	7	7	7
Rhode Island	RI	2	2	7	6
South Carolina	SC	4	4	7	7
South Dakota	SD	5	5	2	5
Tennessee	TN	4	3	6	7
Texas	TX	6	5	5	7
Utah	UT	7	6	3	6
Vermont	VT	1	2	7	5
Virginia	VA	3	3	7	6
Virgin Islands	VI	7	7	7	7
Washington	WA	7	7	1	5
West Virginia	WV	3	2	6	6
Wisconsin	WI	4	3	3	5
Wyoming	WY	6	6	2	5

HOW TO DETERMINE YOUR SHIPMENT COST

1. To determine the origin zone, locate your origin province (A, B, C or D).
A: Newfoundland and Labrador, Nova Scotia, Prince Edward Island, New Brunswick.
B: Quebec, Ontario.
C: Manitoba, Saskatchewan, Alberta, British Columbia.
D: Yukon, Northwest Territories, Nunavut.
2. Locate the destination state of your item.
3. Locate the rate code under the appropriate origin zone.
4. Use the rate code and the weight of the item to determine the shipment price, using the product specific price sheet.

™ Trademark of Canada Post Corporation.

Expedited Parcel™ – USA prices



WEIGHT (up to and including)		RATE CODE / PRICE (\$)						
in (kg) or VE*	in (lb.) or VE*	1	2	3	4	5	6	7
0.5	1.1	21.17	21.56	21.70	21.98	22.27	22.45	23.26
1.0	2.2	23.27	23.84	24.06	24.28	24.57	24.74	26.56
1.5	3.3	25.27	25.75	26.54	26.76	28.98	29.88	30.12
2.0	4.4	27.37	27.82	28.43	28.83	31.95	33.15	33.36
2.5	5.5	28.83	29.52	30.29	30.89	33.08	34.50	34.78
3.0	6.6	30.02	30.55	31.74	32.05	34.06	35.49	36.32
3.5	7.7	31.68	32.19	33.88	34.31	36.70	38.28	39.21
4.0	8.8	33.24	34.48	36.16	36.66	38.21	39.74	40.10
4.5	9.9	34.46	35.89	38.02	38.64	40.88	42.39	42.81
5.0	11.0	36.81	37.44	40.05	40.63	43.44	45.16	47.72
5.5	12.1	38.96	40.26	42.92	43.40	47.05	48.33	51.06
6.0	13.2	41.03	42.53	45.11	45.66	49.14	51.08	52.39
6.5	14.3	42.92	44.72	47.17	47.73	50.98	53.60	55.64
7.0	15.4	44.74	47.14	49.35	49.98	52.54	56.30	57.86
7.5	16.5	47.13	48.56	51.41	52.06	54.95	59.10	61.30
8.0	17.6	49.54	50.48	53.44	54.14	57.08	61.57	64.00
8.5	18.7	50.30	51.00	55.81	56.34	59.58	64.63	67.03
9.0	19.8	52.45	53.01	57.86	58.48	62.42	67.87	69.84
9.5	20.9	54.03	55.38	59.98	60.60	68.17	69.84	71.95
10.0	22.0	56.37	57.98	62.89	63.96	70.37	73.52	76.20
10.5	23.1	58.21	59.96	64.80	66.77	72.95	76.60	79.05
11.0	24.2	59.71	61.17	65.90	68.72	75.65	79.36	81.90
11.5	25.3	61.32	63.27	68.24	70.92	76.07	81.97	84.57
12.0	26.4	63.04	64.94	70.42	72.97	77.10	83.42	86.72
12.5	27.5	65.20	67.38	72.46	75.07	79.03	84.80	88.10
13.0	28.6	67.65	70.04	73.49	77.56	81.30	86.08	90.78
13.5	29.7	69.37	71.54	74.51	78.29	82.15	88.18	91.63
14.0	30.8	71.35	73.76	75.16	78.82	84.79	90.98	94.41
14.5	31.9	73.02	75.43	76.76	80.86	86.23	92.11	96.54
15.0	33.0	74.81	77.09	79.72	83.30	87.91	93.81	99.27
15.5	34.1	77.43	78.49	83.73	84.62	89.86	97.51	101.08
16.0	35.2	78.88	80.41	86.00	86.91	92.32	100.72	103.90
16.5	36.3	80.65	82.26	88.28	89.58	94.85	103.49	106.50
17.0	37.4	82.26	84.30	90.57	92.24	97.42	106.46	109.83
17.5	38.5	84.35	86.36	92.87	94.55	99.92	109.50	112.64
18.0	39.6	86.44	87.77	95.28	96.90	102.49	112.40	115.19
18.5	40.7	88.30	89.93	97.49	98.84	105.03	115.29	117.98
19.0	41.8	90.34	91.55	98.78	100.05	107.75	120.26	121.40
19.5	42.9	92.06	93.70	100.72	102.35	110.39	122.88	124.07
20.0	44.0	93.72	95.52	102.27	103.30	115.16	125.54	127.35
20.5	45.1	95.46	97.67	104.31	106.70	119.85	129.28	130.25
21.0	46.2	97.49	98.92	105.77	109.00	122.52	132.21	133.84
21.5	47.3	99.57	101.02	107.99	111.36	124.91	134.67	137.81
22.0	48.4	101.60	103.12	110.27	113.66	127.40	137.47	140.65
22.5	49.5	103.64	105.15	112.49	115.94	129.85	140.30	143.44
23.0	50.6	105.68	107.20	114.67	118.26	132.63	142.84	146.01
23.5	51.7	107.77	109.31	116.91	120.56	136.78	145.56	148.86
24.0	52.8	109.85	111.40	119.12	122.86	140.04	148.42	151.80
24.5	53.9	111.95	113.57	121.35	125.21	141.96	150.96	154.53
25.0	55.0	113.97	115.66	123.60	127.51	145.40	153.62	157.12
25.5	56.1	115.82	117.51	125.74	128.24	148.48	155.00	158.45
26.0	57.2	117.93	119.56	127.92	129.73	150.71	157.73	161.25
26.5	58.3	119.95	121.66	130.16	131.92	153.08	160.34	163.88
27.0	59.4	121.97	123.70	132.38	134.16	154.56	162.88	166.67
27.5	60.5	124.00	125.85	134.62	136.46	156.73	165.71	169.46
28.0	61.6	126.20	127.89	136.82	138.71	158.65	168.30	172.07
28.5	62.7	128.24	130.01	139.12	140.96	160.72	170.98	174.87
29.0	63.8	130.27	132.15	141.41	143.28	162.39	173.77	177.59
29.5	64.9	131.65	134.19	143.59	145.52	164.56	176.29	180.28
30.0	66.0	133.67	136.27	145.81	147.76	167.87	178.90	182.99
FOR VOLUMETRIC EQUIVALENT (VE)* OVER 30 – ADD PER 0.5								
		1.74	1.87	1.94	2.01	2.6	2.71	2.8

™ Trademark of Canada Post Corporation.

*For more information, refer to your Parcel Services Customer Guide or the Canada Postal Guide at canadapost.ca/postalservices.

Tracked Packet™ – USA prices



WEIGHT (UP TO AND INCLUDING)		PRICE: ALL DESTINATIONS
IN KG	IN LB.	
0.1	0.2	\$13.80
0.25	0.5	\$17.70
0.5	1.1	\$19.54
1.0	2.2	\$23.02
1.5	3.3	\$25.79
2.0	4.4	\$28.75

™ Trademark of Canada Post Corporation.

Small Packet™ – USA Air prices



Small Packet™ – USA

WEIGHT (UP TO AND INCLUDING)		PRICE: ALL DESTINATIONS
IN KG	IN LB.	
0.1	0.2	\$8.68
0.25	0.5	\$10.60
0.5	1.1	\$13.87
1.0	2.2	\$19.96
1.5	3.3	\$23.40
2.0	4.4	\$26.34

™ Trademark of Canada Post Corporation.

Size and speed

SIZE	SPEED
Maximum Standard envelope: 245 mm x 156 mm x 5 mm Standard cards and postcards: 235 mm x 120 mm x N/A Other Letter-post: 380 mm x 270 mm x 20 mm	4 to 6 business days
Minimum 140 mm x 90 mm x 0.18 mm	4 to 6 business days

N/A: Not applicable

Features, options and surcharge prices

CATEGORY	PRICES
Return to Sender	No charge
Registered Mail™	Available via Xpresspost™ – USA

Letter-post pricing table

STANDARD (ENVELOPES, CARDS AND POSTCARDS)	0-30 G	30-50 G
Stamps	\$1.40	\$2.09

OTHER (NON-STANDARD AND OVERSIZE)	0-100 G	100-200 G	200-500 G
Stamps	\$3.43	\$5.99	\$11.99

™ Trademark of Canada Post Corporation.



International

Features, options and other surcharges: Shipping to international destinations outside the U.S.



For more information, refer to your *Parcel Services Customer Guide* or the *Canada Postal Guide* at canadapost.ca/postalservices.

PARCEL SERVICES: INTERNATIONAL OUTSIDE THE U.S.				
FEATURES AND OPTIONS	XPRESSPOST™ - INTERNATIONAL	INTERNATIONAL PARCEL – AIR OR SURFACE	TRACKED PACKET™ - INTERNATIONAL	SMALL PACKET™ INTERNATIONAL – AIR OR SURFACE
Tracking and delivery				
On-Time Delivery Guarantee	✓ +			
Tracking and Delivery Confirmation	✓	⊙	✓	
Delivery Updates	✓		✓	
Reference Number Tracking	✓		✓	
Delivery to a Post Office Box	✓ ▸	✓	✓	✓
Coverage options				
Liability Coverage (up to \$100)	✓	✓	✓	
Additional Liability Coverage (up to \$1,000)	+ \$2.75 per \$100			
Signature				
Signature	◆			
Pickup Services				
Recurring (Scheduled) Pickup ¹	Free with \$15,000 or more of annual parcel shipping purchases per pickup location \$7.50 per week with \$2,500 to \$14,999 of the same purchases per pickup location			
One-Time On-Demand Pickup ²	\$3.50			
Third-Party Recurring (Scheduled) Pickup ¹	\$7.50 per week per additional address			
One-Time Third-Party On-Demand Pickup ²	\$3.50			
Redirection Service				
Package Redirection ³	\$13.00	\$13.00	\$13.00	
Customs clearance				
Postal Presentation and Handling	✓	✓	✓	✓
Other services and charges				
Mailing tube surcharge	\$2.00	\$2.00		
Additional handling surcharge ^{4,5} (for oversized item, if length, width or height exceeds 1 m; and unpackaged item)	\$21.00	\$21.00		
Manual document surcharge	\$2.00	\$2.00	\$2.00	\$2.00
Fuel surcharge may apply	Visit canadapost.ca/fuelsurcharge			
Non-transmitted order surcharge	\$25.00	\$25.00	\$25.00	\$25.00
Non-manifested item surcharge	\$2.00	\$2.00	\$2.00	\$2.00
Barcode label correction fee	\$7.00	\$7.00	\$7.00	\$7.00
Suspended order surcharge	\$25.00	\$25.00	\$25.00	\$25.00
Out-of-spec surcharge ⁶	\$300.00	\$300.00		

✓ Feature included in the service (no additional charge).

◆ Signatory name is automatically included at no additional charge and is provided when available.

⊙ Tracking information available only for events within Canada.

▸ Delivery to a post office box is offered at destinations where available.

+ Available to certain destinations.

1. Visit canadapost.ca/pickup to see where Canada Post offers Pickup Services or to request a pickup.

2. One-Time On-Demand Pickup is free when customers have an active subscription to the Recurring (Scheduled) Pickup service. Visit canadapost.ca/pickup to see where Canada Post offers Pickup Services or to request a pickup.

3. The fee for Package Redirection is per package. Shipping costs to the new destination address also apply. Payment will apply upon successful redirection. Package Redirection is eligible for tracked Canada Post international outbound items up until they are processed in an exchange office. View the [terms and conditions](#) including eligibility requirements.

4. The unpackaged item and oversized item surcharges will not be combined. Customers mailing unpackaged items that are also oversized will only be charged a single fee. For more details, see section 6.7 in the *Parcel Services Customer Guide*.

5. For an oversized item, some exceptions may apply. Refer to the international destination listing at canadapost.ca/postalguide.

6. For an item that exceeds our maximum size or weight specifications (any dimension over 2 m; length and girth combined over 3 m; weight over 30 kg).

NOTE: All options must be selected at the time of shipping. Exceptions and conditions apply. Visit canadapost.ca/postalguide.

™ Trademark of Canada Post Corporation.

Xpresspost™ – International prices



DESTINATION	CODE	RATE CODE	MAX. WEIGHT (KG)	MAX. \$ COVERAGE	OVERSIZED
Albania	AL	103	30	100	N/A
Algeria	DZ	110	30	100	
Argentina	AR	107	20	100	N/A
Australia	AU	105	20	1,000	N/A
Austria	AT	102	30	1,000	•
Bahamas	BS	101	10	1,000	•
Barbados	BB	101	30	300	•
Belarus	BY	103	30	1,000	N/A
Belgium	BE	102	30	1,000	•
Belize	BZ	101	30	1,000	•
Brazil	BR	107	30	1,000	N/A
Cayman Islands	KY	101	20	100	•
Chile	CL	107	30	100	•
China	CN	109	30	1,000	•
Colombia	CO	107	30	100	•
Costa Rica	CR	101	30	100	•
Croatia	HR	103	30	1,000	N/A
Curaçao	CW	101	30	100	•
Cyprus	CY	102	30	1,000	•
Czech Republic	CZ	102	30	1,000	•
Denmark	DK	102	30	1,000	•
Ecuador	EC	107	30	100	•
El Salvador	SV	101	30	100	•
Estonia	EE	103	30	1,000	N/A
Ethiopia	ET	110	30	100	•
Finland	FI	102	30	1,000	•
France	FR	102	30	1,000	•
Germany	DE	102	30	1,000	•
Greece	GR	102	30	1,000	•
Grenada	GD	101	30	100	•
Guyana	GY	107	30	100	•
Hong Kong	HK	104	30	1,000	•
Hungary	HU	102	30	1,000	•
Iceland	IS	102	30	1,000	•
India	IN	106	20	1,000	•
Indonesia	ID	106	30	100	•
Ireland	IE	102	30	1,000	•
Israel	IL	108	20	1,000	•
Italy	IT	102	30	1,000	•
Jamaica	JM	101	20	300	N/A
Japan	JP	104	30	1,000	•
Kenya	KE	110	30	1,000	•
Korea, South	KR	104	30	1,000	•
Latvia	LV	103	30	1,000	N/A
Lebanon	LB	108	30	100	N/A
Liechtenstein	LI	102	30	1,000	•
Lithuania	LT	103	30	1,000	N/A
Luxembourg	LU	102	30	1,000	•
Macau	MO	104	20	1,000	•
Malaysia	MY	104	30	1,000	•
Malta	MT	102	20	100	•
Mauritius	MU	110	20	300	N/A
Mexico	MX	101	20	100	•
Monaco	MC	102	30	1,000	•
Morocco	MA	110	30	1,000	•
Netherlands	NL	102	30	1,000	•
New Zealand	NZ	105	30	1,000	•
Norfolk Island	NF	105	20	1,000	N/A
Norway	NO	102	30	1,000	•
Philippines	PH	106	20	100	•
Poland	PL	103	20	1,000	•
Portugal	PT	102	30	1,000	•
Romania	RO	103	30	1,000	N/A
Russian Federation	RU	103	20	1,000	N/A
Saint Kitts and Nevis	KN	101	20	300	•
Saint Lucia	LC	101	20	200	•
Sint Maarten (Netherlands)	SX	101	30	100	•
San Marino	SM	102	30	1,000	N/A
Saudi Arabia	SA	108	30	1,000	•
Serbia	RS	103	30	1,000	•
Singapore	SG	104	30	100	•
Slovakia	SK	103	30	1,000	•
Slovenia	SI	103	30	1,000	•
Spain	ES	102	30	1,000	•
Sri Lanka	LK	106	20	100	•
Sweden	SE	102	20	1,000	•
Switzerland	CH	102	30	1,000	•
Syria	SY	108	20	100	•
Taiwan	TW	104	30	1,000	•
Thailand	TH	104	30	1,000	•
Trinidad and Tobago	TT	101	20	1,000	N/A
United Arab Emirates	AE	108	30	1,000	•
United Kingdom	GB	102	30	1,000	•
Vietnam	VN	106	30	100	•

HOW TO DETERMINE YOUR SHIPMENT COST

1. Identify your destination, then find the corresponding rate code.
2. Use the rate code indicated and determine the price, according to the weight of the shipment. See following page.

NOTES:

Xpresspost™ – International is available only to participating destinations, as listed. Other destinations can be found in the listing for International Parcel – Air.

The destination code is to be used on the manifest and not in lieu of the full destination name in the address block.

N/A: Not available

™ Trademark of Canada Post Corporation.

Xpresspost™ – International prices



WEIGHT (up to and including)		RATE CODE / PRICE (\$)									
in (kg) or VE*	in (lb.) or VE*	101	102	103	104	105	106	107	108	109	110
0.5	1.1	60.52	71.83	90.85	76.89	78.46	86.23	83.52	92.89	81.01	91.83
1.0	2.2	63.30	80.41	97.83	86.12	87.32	94.82	91.31	99.82	89.56	96.55
1.5	3.3	66.39	86.50	106.28	92.58	94.16	102.56	100.56	111.30	96.15	106.57
2.0	4.4	72.61	93.84	116.50	100.48	102.26	111.76	110.98	124.57	104.22	118.39
2.5	5.5	79.49	104.96	128.81	112.61	114.14	124.84	123.11	140.63	116.71	133.13
3.0	6.6	87.32	115.94	143.11	124.22	125.73	137.87	137.31	156.38	128.31	148.52
3.5	7.7	95.90	130.66	160.28	140.63	139.30	155.54	151.90	173.34	144.67	164.81
4.0	8.8	103.75	141.28	174.32	151.55	150.39	168.01	165.23	189.33	156.01	179.82
4.5	9.9	113.05	153.36	189.22	164.40	163.61	182.24	178.47	208.02	169.04	197.40
5.0	11.0	122.52	162.60	204.52	174.23	173.83	194.55	194.88	226.75	179.18	215.54
5.5	12.1	129.68	173.08	220.65	185.40	185.72	206.98	208.10	239.41	189.08	228.80
6.0	13.2	136.82	181.78	234.63	194.38	194.82	218.52	220.61	252.33	198.62	241.24
6.5	14.3	145.38	189.71	248.14	202.50	203.06	229.15	231.29	264.76	207.13	253.14
7.0	15.4	152.76	199.17	262.61	212.52	213.11	241.16	242.44	277.20	217.34	265.55
7.5	16.5	160.29	208.41	275.26	222.64	223.29	252.93	253.61	288.96	227.65	277.14
8.0	17.6	167.22	214.26	287.04	228.67	229.51	261.22	264.40	299.82	233.51	287.92
8.5	18.7	174.71	223.05	299.52	238.37	239.25	272.50	275.63	312.50	243.58	300.28
9.0	19.8	181.60	230.48	311.61	245.82	246.86	282.19	286.01	324.09	251.49	311.64
9.5	20.9	189.08	237.90	323.62	253.79	254.92	292.02	296.94	337.97	259.95	325.14
10.0	22.0	196.63	246.72	334.72	263.08	264.57	303.02	308.35	351.73	269.31	339.09
10.5	23.1	209.37	251.55	346.84	267.48	274.77	311.80	318.94	365.01	283.20	352.18
11.0	24.2	216.86	260.34	358.80	276.77	284.56	322.41	329.59	378.52	293.27	365.49
11.5	25.3	223.48	264.55	368.53	280.83	288.75	328.72	338.04	390.22	297.57	376.61
12.0	26.4	231.94	270.18	379.46	286.39	294.64	336.76	347.88	401.77	303.75	388.26
12.5	27.5	239.29	277.50	391.00	294.33	302.78	346.47	358.37	413.30	312.16	399.74
13.0	28.6	247.10	286.18	403.30	303.63	312.75	357.65	369.41	425.98	321.67	412.29
13.5	29.7	254.50	293.48	414.53	311.36	320.57	367.29	379.68	439.49	329.83	425.13
14.0	30.8	261.75	300.74	425.64	318.89	328.52	376.62	390.42	452.65	337.99	437.67
14.5	31.9	269.78	309.49	437.11	328.44	338.43	387.74	402.30	468.14	348.05	452.27
15.0	33.0	277.74	318.06	447.13	337.84	348.09	398.96	414.61	481.98	358.16	464.60
15.5	34.1	286.45	326.81	454.89	346.96	357.88	409.30	425.61	495.52	368.78	477.19
16.0	35.2	293.81	335.56	465.99	356.25	367.75	419.86	436.41	508.45	379.10	489.80
16.5	36.3	301.77	345.64	477.39	367.67	379.42	432.26	448.00	523.02	391.16	502.99
17.0	37.4	309.23	354.44	488.68	376.94	389.10	442.95	458.76	534.30	401.15	514.76
17.5	38.5	316.30	361.45	499.74	384.92	397.36	452.43	468.86	546.18	409.56	526.66
18.0	39.6	322.21	365.67	509.40	388.93	401.53	458.67	477.34	556.50	413.90	536.66
18.5	40.7	329.16	371.36	518.66	394.76	407.64	466.52	486.98	567.80	420.23	547.02
19.0	41.8	335.39	376.89	528.45	399.96	413.10	473.68	496.60	579.40	426.27	557.31
19.5	42.9	344.25	382.56	538.42	405.93	419.20	481.49	506.40	590.78	432.41	567.71
20.0	44.0	351.56	391.21	549.53	414.99	428.93	491.82	517.76	603.28	442.00	578.97
20.5	45.1	365.43	396.87	564.23	420.17	434.66	498.96	527.24	613.80	447.78	588.26
21.0	46.2	373.10	403.99	574.87	427.53	442.48	507.60	536.96	623.63	455.83	598.20
21.5	47.3	379.93	409.60	585.17	433.34	448.57	515.25	546.67	634.61	462.17	608.14
22.0	48.4	387.58	413.77	594.50	437.25	452.63	521.07	554.93	643.06	466.25	616.72
22.5	49.5	394.06	418.01	604.46	441.55	457.06	527.47	562.86	653.08	470.76	625.82
23.0	50.6	400.62	422.18	614.19	445.64	461.61	533.79	570.81	662.66	475.14	635.34
23.5	51.7	407.01	426.33	623.81	449.76	465.78	539.87	578.96	671.89	479.42	644.41
24.0	52.8	412.70	430.56	632.51	453.24	469.57	545.37	586.76	680.34	483.15	652.28
24.5	53.9	420.29	437.78	643.56	461.32	478.05	555.17	597.18	692.06	491.85	662.82
25.0	55.0	427.29	444.98	654.43	469.02	486.24	564.41	607.68	702.81	500.20	672.64
25.5	56.1	443.71	450.65	669.20	474.26	491.91	571.21	615.71	712.22	505.94	681.64
26.0	57.2	450.70	457.89	679.77	481.67	499.92	579.91	625.01	722.49	513.98	691.73
26.5	58.3	457.71	463.51	689.73	487.53	506.13	587.36	633.35	731.83	520.21	701.04
27.0	59.4	464.05	467.66	700.01	491.46	510.24	592.93	640.88	740.39	524.28	709.97
27.5	60.5	470.76	473.40	708.89	497.60	516.65	600.49	649.14	750.00	530.97	718.85
28.0	61.6	477.63	479.08	718.81	503.46	523.08	608.11	657.90	760.26	537.75	728.48
28.5	62.7	483.84	483.07	727.68	507.36	527.06	613.91	665.92	769.55	541.90	737.23
29.0	63.8	489.82	485.71	736.09	509.49	529.48	618.34	673.29	777.71	544.10	745.41
29.5	64.9	496.27	489.82	745.17	513.59	533.64	624.10	681.37	787.53	548.29	754.22
30.0	66.0	502.73	495.43	755.08	519.26	539.73	631.11	690.14	797.08	554.08	763.46
FOR VOLUMETRIC EQUIVALENT (VE)* OVER 30 – ADD PER 0.5											
		7.51	5.02	10.03	5.01	5.21	6.65	8.2	9.38	5.31	9.22

™ Trademark of Canada Post Corporation.

International Parcel – Air prices



DESTINATION	CODE	RATE CODE	MAX. WEIGHT (KG)	MAX. \$ COVERAGE
Afghanistan	AF	206	20	100
Aland Islands	AX	202	30	1,000
Andorra	AD	202	30	1,000
Angola	AO	210	20	100
Anguilla	AI	201	20	600
Antarctica	AQ	210	20	1,000
Antigua and Barbuda	AG	201	20	100
Armenia	AM	210	20	1,000
Aruba	AW	201	30	100
Ascension	AC	210	20	300
Azerbaijan	AZ	210	30	100
Bahrain	BH	208	20	100
Bangladesh	BD	206	30	1,000
Benin	BJ	210	20	300
Bermuda	BM	201	20	100
Bhutan	BT	206	30	1,000
Bolivia	BO	207	30	100
Bonaire	BQ	201	30	100
Bosnia-Herzegovina	BA	203	20	1,000
Botswana	BW	210	30	300
Bouvet Island	BV	205	20	1,000
British Indian Ocean Territory	IO	210	30	100
British Virgin Islands	VG	201	20	200
Brunei Darussalam	BN	206	20	1,000
Bulgaria	BG	203	30	1,000
Burkina Faso	BF	210	30	1,000
Burundi	BI	210	30	1,000
Cambodia	KH	206	30	100
Cameroon	CM	210	30	1,000
Cape Verde	CV	210	30	100
Central African Republic	CF	210	30	200
Chad	TD	210	30	800
Christmas Island	CX	205	20	1,000
Cocos (Keeling) Islands	CC	205	20	1,000
Comoros	KM	210	20	1,000
Congo, Democratic Republic	CD	210	30	100
Congo	CG	210	20	1,000
Cook Islands	CK	210	30	800
Côte d'Ivoire	CI	210	30	1,000
Cuba	CU	201	10	100
Djibouti	DJ	210	20	1,000
Dominica	DM	201	20	100
Dominican Republic	DO	201	30	100
Dutch Caribbean	BQ	201	30	100
Egypt	EG	208	30	1,000
Equatorial Guinea	GQ	210	30	100
Eritrea	ER	210	20	100
Eswatini	SZ	210	30	100
Falkland Islands	FK	207	30	700
Faroe Islands	FO	202	30	1,000
Fiji	FJ	210	20	1,000
French Guiana	GF	207	30	1,000
French Polynesia	PF	206	30	1,000
French Southern Territories	TF	205	20	1,000
Gabon	GA	210	30	200
Gambia	GM	210	20	1,000
Georgia	GE	210	30	1,000
Ghana	GH	210	30	500
Gibraltar	GI	202	20	100
Greenland	GL	202	30	1,000
Guadeloupe	GP	201	30	1,000
Guatemala	GT	201	20	100
Guernsey	GG	202	30	1,000
Guinea	GN	210	30	1,000
Guinea-Bissau	GW	210	20	100
Haiti	HT	201	30	100
Heard and McDonald Islands	HM	205	20	1,000
Holy See (Vatican)	VA	202	20	1,000
Honduras	HN	201	20	100
Iran	IR	210	20	100
Iraq	IQ	208	20	100
Isle of Man	IM	202	30	1,000
Jersey	JE	202	30	1,000
Jordan	JO	208	30	100
Kazakhstan	KZ	210	20	1,000
Kiribati	KI	206	20	100
Korea, Dem. People's Republic	KP	210	20	100
Kosovo	XZ	203	30	100
Kuwait	KW	208	30	1,000
Kyrgyzstan	KG	210	30	100
Lao, People's Dem. Republic	LA	206	30	100
Lesotho	LS	210	20	100
Liberia	LR	210	20	100
Libya	LY	210	20	100
Macedonia	MK	203	30	1,000
Madagascar	MG	210	20	1,000
Malawi	MW	210	20	100
Maldives	MV	206	20	100
Mali	ML	210	20	1,000
Martinique	MQ	201	30	1,000
Mauritania	MR	210	20	900
Mayotte	YT	210	30	1,000
Moldova, Republic	MD	203	30	1,000
Mongolia	MN	210	20	600
Montenegro	ME	203	30	1,000
Montserrat	MS	201	20	1,000
Mozambique	MZ	210	20	100
Myanmar	MM	204	20	1,000
Namibia	NA	210	20	100
Nauru	NR	206	20	300
Nepal	NP	206	20	100
New Caledonia	NC	210	30	1,000
Nicaragua	NI	201	30	100
Niger	NE	210	30	100
Nigeria	NG	210	30	100
Niue	NU	210	20	900
Oman	OM	208	20	100
Pakistan	PK	206	30	1,000
Panama	PA	201	30	100
Papua New Guinea	PG	210	25	200
Paraguay	PY	207	30	100
Peru	PE	207	30	100
Pitcairn	PN	210	10	100
Qatar	QA	208	30	1,000
Réunion	RE	210	30	1,000
Rwanda	RW	210	30	100
Saba	BQ	201	30	100
S Georgia/S Sandwich Islands	GS	210	30	700
Saint Barthelemy	BL	201	30	1,000
Saint Helena	SH	210	20	300
Saint Martin	MF	201	30	1,000
Saint Pierre and Miquelon	PM	202	30	1,000
Samoa	WS	210	20	400
Sao Tome and Principe	ST	210	30	100
Senegal	SN	210	30	1,000
Seychelles	SC	210	30	100
Sint Eustatius	BQ	201	30	100
Sierra Leone	SL	210	30	100
Solomon Islands	SB	210	20	100
South Africa	ZA	210	30	1,000
South Sudan	SS	210	30	100
Saint Vincent and Grenadines	VC	201	10	200
Sudan	SD	210	30	100
Suriname	SR	207	30	800
Svalbard and Jan Mayen	SJ	202	30	100
Tajikistan	TJ	210	30	1,000
Tanzania	TZ	210	30	100
Timor-Leste	TL	206	10	100
Togo	TG	210	20	100
Tokelau	TK	210	20	1,000
Tonga	TO	210	20	700
Tristan da Cunha	TA	210	10	100
Tunisia	TN	210	20	1,000
Turkey	TR	208	30	1,000
Turkmenistan	TM	210	20	100
Turks and Caicos Islands	TC	201	20	100
Tuvalu	TV	210	25	1,000
Uganda	UG	210	20	100
Ukraine	UA	202	30	1,000
Uruguay	UY	207	30	100
Uzbekistan	UZ	210	20	100
Vanuatu	VU	210	20	100
Venezuela	VE	207	30	100
Wallis and Futuna	WF	210	30	1,000
West Bank and Gaza Strip	PS	208	30	1,000
Western Sahara	EH	210	30	1,000
Yemen	YE	208	30	100
Zambia	ZM	210	30	800
Zimbabwe	ZW	210	30	1,000

✦ Service for oversized items available to these destinations up to a maximum of 1.5 m for any one dimension.

NOTE: International Parcel – Air is available only to destinations as listed. Other destinations can be found in the listing for Xpresspost™ – International.

™ Trademark of Canada Post Corporation.

International Parcel – Air prices



WEIGHT (up to and including)		RATE CODE / PRICE (\$)									
in (kg) or VE*	in (lb.) or VE*	201	202	203	204	205	206	207	208	209	210
0.5	1.1	49.43	61.68	71.88	64.17	57.83	74.35	66.99	78.41	79.06	79.60
1.0	2.2	52.39	67.72	79.29	69.84	62.59	82.20	77.13	87.32	87.32	87.70
1.5	3.3	56.01	74.05	86.62	75.62	67.40	89.99	85.90	96.21	95.48	95.71
2.0	4.4	61.32	82.50	97.41	83.83	74.40	102.05	95.95	109.35	108.39	108.32
2.5	5.5	66.93	92.35	111.10	92.29	82.37	116.77	105.19	125.30	123.97	124.02
3.0	6.6	73.63	102.65	124.99	105.24	91.80	132.82	119.81	141.99	141.07	142.32
3.5	7.7	81.06	114.74	139.54	116.77	101.97	149.85	129.03	155.71	159.20	159.75
4.0	8.8	88.46	126.99	155.04	130.29	112.40	167.95	139.43	174.23	178.35	178.64
4.5	9.9	96.74	140.63	170.19	145.81	123.95	185.48	153.16	191.98	196.99	196.56
5.0	11.0	105.80	157.10	189.76	161.70	137.83	207.54	167.89	213.46	220.34	217.14
5.5	12.1	113.54	160.66	196.82	167.47	144.85	218.65	180.21	232.54	228.72	225.23
6.0	13.2	121.19	167.42	203.82	173.29	152.03	229.82	188.78	245.33	237.13	233.13
6.5	14.3	128.80	174.97	212.63	180.89	159.86	239.83	198.08	257.22	247.56	244.49
7.0	15.4	136.58	182.57	221.31	188.48	167.89	249.87	207.43	269.16	257.88	255.90
7.5	16.5	144.29	191.79	232.05	196.88	176.85	261.21	216.00	280.40	269.59	266.65
8.0	17.6	152.03	201.02	242.92	205.32	185.68	272.56	225.84	291.64	281.37	277.50
8.5	18.7	159.75	210.80	254.56	214.26	194.84	284.55	235.26	304.54	293.81	289.51
9.0	19.8	167.35	220.61	266.40	223.10	204.02	296.68	244.61	317.39	306.23	301.46
9.5	20.9	175.09	230.67	278.28	233.57	213.24	309.06	253.13	331.27	318.29	313.71
10.0	22.0	182.88	238.10	290.17	244.07	222.57	321.49	264.06	345.17	330.49	326.03
10.5	23.1	190.79	243.30	301.29	253.13	231.97	333.87	274.90	345.76	344.06	339.55
11.0	24.2	198.52	251.49	312.27	262.24	241.39	346.36	285.59	356.45	357.54	353.00
11.5	25.3	206.10	259.68	324.64	272.30	250.61	359.22	296.33	369.96	370.92	365.86
12.0	26.4	213.77	266.70	336.95	282.33	259.85	372.18	307.06	383.55	384.20	378.72
12.5	27.5	221.54	276.15	349.37	292.45	269.35	385.24	318.13	397.11	397.72	392.41
13.0	28.6	229.33	285.64	361.89	302.73	278.77	398.40	329.28	410.82	411.24	405.98
13.5	29.7	237.07	295.18	374.19	312.82	288.00	411.36	340.40	424.69	424.63	419.63
14.0	30.8	244.67	304.60	386.49	322.82	297.27	424.35	351.37	438.76	438.10	433.09
14.5	31.9	252.38	308.52	396.63	332.85	306.12	437.38	362.64	452.47	451.44	446.67
15.0	33.0	260.12	312.32	406.64	342.86	315.09	450.36	373.71	466.16	464.83	460.10
15.5	34.1	267.95	315.76	413.59	348.84	322.31	460.18	381.13	477.02	475.10	471.18
16.0	35.2	275.77	322.64	420.42	358.13	329.68	470.16	388.60	487.88	485.35	482.22
16.5	36.3	283.41	331.08	431.02	367.99	338.37	482.69	399.30	500.92	498.29	495.29
17.0	37.4	290.91	339.55	441.70	377.85	347.21	495.24	409.99	513.97	511.31	508.40
17.5	38.5	297.48	347.94	452.89	387.89	355.57	508.10	420.60	527.18	524.51	521.20
18.0	39.6	304.00	356.45	463.93	397.96	363.80	520.95	431.33	540.47	537.73	534.00
18.5	40.7	311.48	364.77	474.13	407.56	372.50	533.32	442.32	553.91	550.53	548.30
19.0	41.8	319.02	373.10	484.38	417.21	381.34	545.70	453.30	567.44	563.33	562.61
19.5	42.9	326.92	380.88	492.65	426.81	389.82	557.89	464.16	580.65	575.88	575.93
20.0	44.0	334.78	383.71	500.98	436.41	398.26	569.96	475.22	593.93	588.49	589.41
20.5	45.1	342.15	385.95	504.11	443.82	404.56	578.60	482.03	603.36	597.37	599.61
21.0	46.2	349.57	391.56	507.26	451.13	410.79	587.29	489.11	612.86	606.31	609.91
21.5	47.3	357.17	399.11	516.55	460.79	419.04	599.36	499.71	625.61	618.83	622.18
22.0	48.4	364.58	406.78	525.72	470.70	427.41	611.50	510.46	638.41	631.16	634.48
22.5	49.5	372.32	414.24	534.94	480.39	435.82	623.86	521.26	651.62	643.91	647.28
23.0	50.6	380.04	421.92	544.27	490.12	444.14	636.25	532.11	664.91	656.74	660.07
23.5	51.7	387.35	429.40	553.06	499.48	452.37	647.88	542.26	677.34	668.84	671.96
24.0	52.8	394.60	437.01	561.83	508.84	460.53	659.72	552.41	689.64	681.00	683.73
24.5	53.9	402.60	445.76	573.70	518.98	469.81	672.57	564.48	703.90	694.30	696.74
25.0	55.0	410.58	454.45	585.71	528.98	478.99	685.49	576.37	718.07	707.63	709.69
25.5	56.1	418.30	460.66	590.60	535.68	485.54	693.70	585.28	727.32	716.14	722.49
26.0	57.2	425.92	466.95	595.56	542.21	491.99	701.95	594.22	736.59	724.61	735.28
26.5	58.3	433.56	475.04	605.88	551.82	500.64	713.85	604.55	749.09	736.92	747.95
27.0	59.4	441.23	483.13	616.20	561.39	509.18	725.80	614.99	761.46	749.21	760.60
27.5	60.5	448.89	490.91	625.72	571.11	517.76	738.00	625.39	774.57	761.82	773.05
28.0	61.6	456.50	498.69	635.03	580.83	526.26	750.23	635.81	787.59	774.45	785.53
28.5	62.7	463.88	505.96	643.43	590.18	534.16	762.06	646.36	800.04	786.63	797.80
29.0	63.8	471.18	513.05	651.75	599.61	542.18	773.89	656.74	812.47	798.89	809.85
29.5	64.9	478.48	520.35	660.49	608.95	550.02	785.18	667.32	825.26	810.53	822.24
30.0	66.0	485.85	527.55	669.31	618.30	558.00	796.49	677.81	837.98	822.18	834.49
FOR VOLUMETRIC EQUIVALENT (VE)* OVER 30 – ADD PER 0.5											
		7.53	7.31	8.36	8.94	7.91	11.12	10.16	12	11.45	12.48

HOW TO DETERMINE YOUR SHIPMENT COST

1. Identify your destination, then find the corresponding rate code on the previous page.
2. Use the rate code indicated and determine the price, according to the weight of the shipment.

NOTE: The destination code is to be used on the manifest and not in lieu of the full destination name in the address block.

™ Trademark of Canada Post Corporation.

International Parcel – Surface prices



DESTINATION	CODE	RATE CODE	MAX. WEIGHT (KG)	MAX. \$ COVERAGE
Afghanistan	AF	406	20	100
Aland Islands	AX	402	30	1,000
Albania	AL	403	30	100
Algeria	DZ	410	30	100
Andorra	AD	402	30	1,000
Angola	AO	410	20	100
Anguilla	AI	401	20	600
Antarctica	AQ	410	20	1,000
Antigua and Barbuda	AG	401	20	100
Argentina	AR	407	20	100
Armenia	AM	410	20	100
Aruba	AW	401	30	100
Ascension	AC	410	20	300
Australia	AU	405	20	1,000
Austria	AT	402	30	1,000
Azerbaijan	AZ	410	30	100
Bahamas	BS	401	10	1,000
Bahrain	BH	408	20	100
Bangladesh	BD	406	30	1,000
Barbados	BB	401	20	300
Belarus	BY	403	30	1,000
Belgium	BE	402	30	1,000
Belize	BZ	401	20	1,000
Benin	BJ	410	20	300
Bermuda	BM	401	20	100
Bhutan	BT	406	30	1,000
Bolivia	BO	407	30	100
Bosnia-Herzegovina	BA	403	20	1,000
Botswana	BW	410	30	300
Bouvet Island	BV	405	20	1,000
Brazil	BR	407	30	100
British Indian Ocean Territory	IO	410	30	100
British Virgin Islands	VG	401	20	200
Brunei Darussalam	BN	406	20	1,000
Bulgaria	BG	403	30	1,000
Burkina Faso	BF	410	30	1,000
Burundi	BI	410	30	1,000
Cambodia	KH	406	30	100
Cameroon	CM	410	30	1,000
Cape Verde	CV	410	30	100
Cayman Islands	KY	401	20	100
Central African Republic	CF	410	30	200
Chad	TD	410	30	800
Chile	CL	407	20	100
China	CN	409	30	1,000
Christmas Island	CX	405	20	1,000
Cocos (Keeling) Islands	CC	405	20	1,000
Colombia	CO	407	30	100
Comoros	KM	410	20	1,000
Congo, Democratic Republic	CD	410	30	100
Congo	CG	410	20	1,000
Cook Islands	CK	410	30	800
Costa Rica	CR	401	30	100
Côte d'Ivoire	CI	410	30	1,000
Croatia	HR	403	30	1,000
Cuba	CU	401	10	100
Curaçao	CW	401	30	1,000
Cyprus	CY	402	30	1,000
Czech Republic	CZ	402	30	1,000
Denmark	DK	402	30	1,000
Djibouti	DJ	410	20	1,000
Dominica	DM	401	20	100
Dominican Republic	DO	401	30	100
Dutch Caribbean	BQ	401	30	1,000
Ecuador	EC	407	30	100
Egypt	EG	408	30	1,000
El Salvador	SV	401	20	100
Equatorial Guinea	GQ	410	30	100
Eritrea	ER	410	20	100
Estonia	EE	403	30	1,000
Eswatini	SZ	410	30	100
Ethiopia	ET	410	30	100
Falkland Islands	FK	407	30	700
Faroe Islands	FO	402	30	1,000
Fiji	FJ	410	20	1,000
Finland	FI	402	30	1,000
France	FR	402	30	1,000
French Guiana	GF	407	30	1,000
French Polynesia	PF	406	30	1,000

DESTINATION	CODE	RATE CODE	MAX. WEIGHT (KG)	MAX. \$ COVERAGE
French Southern Territories	TF	405	20	1,000
Gabon	GA	410	30	100
Gambia	GM	410	20	1,000
Georgia	GE	410	20	100
Germany	DE	402	30	700
Ghana	GH	410	30	500
Gibraltar	GI	402	20	100
Greece	GR	402	20	1,000
Greenland	GL	402	30	1,000
Grenada	GD	401	20	100
Guadeloupe	GP	401	30	1,000
Guatemala	GT	401	20	100
Guernsey	GG	402	30	1,000
Guinea	GN	410	30	100
Guinea-Bissau	GW	410	20	100
Guyana	GY	407	20	100
Haiti	HT	401	30	100
Heard and McDonald Islands	HM	405	20	1,000
Holy See (Vatican)	VA	402	20	1,000
Honduras	HN	401	20	100
Hong Kong	HK	404	30	1,000
Hungary	HU	402	30	1,000
Iceland	IS	402	30	1,000
India	IN	406	20	1,000
Indonesia	ID	406	30	100
Iran	IR	410	20	100
Ireland	IE	402	30	1,000
Isle of Man	IM	402	30	1,000
Israel	IL	408	20	1,000
Italy	IT	402	20	1,000
Jamaica	JM	401	20	300
Japan	JP	404	30	1,000
Jersey	JE	402	30	1,000
Jordan	JO	408	30	100
Kazakhstan	KZ	410	20	1,000
Korea, South	KR	404	20	1,000
Kosovo	XZ	403	30	100
Kuwait	KW	408	30	1,000
Kyrgyzstan	KG	410	30	100
Laos, People's Dem. Republic	LA	406	30	100
Latvia	LV	403	30	1,000
Lesotho	LS	410	20	100
Liberia	LR	410	20	100
Libya	LY	410	20	100
Liechtenstein	LI	402	30	1,000
Lithuania	LT	403	30	1,000
Luxembourg	LU	402	30	1,000
Macau	MO	404	20	1,000
Macedonia	MK	403	30	1,000
Madagascar	MG	410	20	1,000
Malawi	MW	410	20	100
Malaysia	MY	404	20	1,000
Maldives	MV	406	20	100
Mali	ML	410	20	1,000
Malta	MT	402	20	100
Martinique	MQ	401	30	1,000
Mauritania	MR	410	20	900
Mauritius	MU	410	20	300
Mayotte	YT	410	30	1,000
Mexico	MX	401	20	100
Moldova, Republic	MD	403	30	1,000
Monaco	MC	402	30	1,000
Mongolia	MN	410	20	100
Montenegro	ME	403	30	1,000
Montserrat	MS	401	20	1,000
Morocco	MA	410	30	1,000
Mozambique	MZ	410	20	100
Myanmar	MM	404	20	1,000
Namibia	NA	410	20	100
Nauru	NR	406	20	300
Nepal	NP	406	20	100
Netherlands	NL	402	20	1,000
New Caledonia	NC	410	30	1,000
New Zealand	NZ	405	30	1,000
Nicaragua	NI	401	30	100
Niger	NE	410	30	100

DESTINATION	CODE	RATE CODE	MAX. WEIGHT (KG)	MAX. \$ COVERAGE
Nigeria	NG	410	30	100
Niue	NU	410	20	900
Norfolk Island	NF	405	20	1,000
Norway	NO	402	30	100
Oman	OM	408	20	100
Pakistan	PK	406	30	1,000
Panama	PA	401	30	100
Papua New Guinea	PG	410	25	200
Paraguay	PY	407	30	100
Peru	PE	407	30	100
Philippines	PH	406	20	100
Pitcairn	PN	410	10	100
Poland	PL	403	20	1,000
Portugal	PT	402	30	1,000
Qatar	QA	408	30	1,000
Réunion	RE	410	30	1,000
Romania	RO	403	30	1,000
Russian Federation	RU	403	20	1,000
Rwanda	RW	410	30	100
S Georgia/S Sandwich Islands	GS	410	30	700
Saint Barthelemy	BL	401	30	1,000
Saint Helena	SH	410	20	300
Saint Kitts and Nevis	KN	401	20	300
Saint Lucia	LC	401	20	200
Saint Martin	MF	401	30	1,000
Saint Pierre and Miquelon	PM	402	30	1,000
Samoa	WS	410	20	400
San Marino	SM	402	20	1,000
Sao Tome and Principe	ST	410	30	100
Saudi Arabia	SA	408	30	1,000
Senegal	SN	410	30	1,000
Serbia	RS	403	30	1,000
Seychelles	SC	410	30	100
Sierra Leone	SL	410	30	100
Singapore	SG	404	30	1,000
Sint Maarten (Netherlands)	SX	401	30	1,000
Slovakia	SK	403	30	1,000
Slovenia	SI	403	30	1,000
Solomon Islands	SB	410	20	100
South Africa	ZA	410	30	1,000
South Sudan	SS	410	30	100
Spain	ES	402	20	1,000
Sri Lanka	LK	406	20	100
Saint Vincent and Grenadines	VC	401	10	200
Sudan	SD	410	30	100
Suriname	SR	407	30	800
Svalbard and Jan Mayen	SJ	402	30	100
Sweden	SE	402	20	1,000
Switzerland	CH	402	30	1,000
Syria	SY	408	30	1,000
Taiwan	TW	404	20	1,000
Tajikistan	TJ	410	30	100
Tanzania	TZ	410	30	100
Thailand	TH	404	30	1,000
Togo	TG	410	20	100
Tokelau	TK	410	20	1,000
Tonga	TO	410	20	700
Trinidad and Tobago	TT	401	20	1,000
Tristan da Cunha	TA	410	10	100
Tunisia	TN	410	20	1,000
Turkey	TR	408	30	1,000
Turkmenistan	TM	410	20	100
Turks and Caicos Islands	TC	401	20	100
Tuvalu	TV	410	25	1,000
Uganda	UG	410	20	100
Ukraine	UA	402	30	1,000
United Arab Emirates	AE	408	30	1,000
United Kingdom	GB	402	30	1,000
Uruguay	UY	407	30	100
Uzbekistan	UZ	410	20	100
Vanuatu	VU	410	20	100
Venezuela	VE	407	30	100
Vietnam	VN	406	30	100
Wallis and Futuna	WF	410	30	1,000
West Bank and Gaza Strip	PS	408	20	1,000
Western Sahara	EH	410	30	1,000
Yemen	YE	408	30	100
Zambia	ZM	410	30	800
Zimbabwe	ZW	410	30	1,000

◆ Service for oversized items is available to these destinations up to a maximum of 1.5 m for any one dimension.

™ Trademark of Canada Post Corporation.

International Parcel – Surface prices



WEIGHT (up to and including)		RATE CODE / PRICE (\$)									
in (kg) or VE*	in (lb.) or VE*	401	402	403	404	405	406	407	408	409	410
0.5	1.1	41.34	49.67	56.93	52.98	54.83	60.12	57.81	62.91	60.31	58.52
1.0	2.2	45.52	52.51	60.31	56.16	57.94	62.44	60.56	65.95	61.32	62.12
1.5	3.3	49.53	55.28	63.83	59.46	61.25	67.72	63.28	69.90	64.82	65.74
2.0	4.4	52.80	58.61	68.20	63.50	65.27	72.09	68.38	74.92	68.92	70.09
2.5	5.5	57.29	63.62	73.95	68.92	70.78	78.44	74.28	81.22	75.01	76.13
3.0	6.6	62.76	69.84	80.88	75.65	77.25	85.97	81.22	89.22	82.02	83.41
3.5	7.7	70.50	78.10	90.79	84.86	86.17	96.50	90.73	99.60	91.60	93.65
4.0	8.8	79.76	88.35	102.71	96.04	97.70	108.92	102.52	112.57	103.64	105.82
4.5	9.9	89.22	98.87	114.95	107.60	109.32	122.01	114.83	126.14	116.00	118.39
5.0	11.0	96.88	107.55	125.78	117.26	119.25	133.75	124.94	137.45	126.67	129.42
5.5	12.1	100.05	110.63	129.36	121.22	122.61	138.87	130.43	141.34	131.80	132.94
6.0	13.2	103.24	113.83	132.94	125.06	126.14	141.14	132.86	145.17	136.93	136.23
6.5	14.3	107.60	118.13	138.24	129.89	131.02	146.62	139.02	150.61	141.93	141.93
7.0	15.4	112.04	122.43	143.58	134.58	135.92	152.05	142.39	155.89	146.95	147.49
7.5	16.5	115.13	126.31	148.56	139.15	140.40	158.33	148.29	162.12	152.65	153.89
8.0	17.6	118.32	130.10	153.58	143.79	144.77	164.49	151.33	168.20	158.40	160.31
8.5	18.7	120.95	133.08	157.27	147.30	148.14	168.85	156.48	172.75	162.59	164.59
9.0	19.8	123.54	135.92	160.91	150.67	151.45	173.15	158.54	177.31	166.73	168.98
9.5	20.9	127.03	139.75	165.42	154.71	155.82	178.46	164.14	181.48	170.89	172.95
10.0	22.0	130.43	143.52	169.89	158.66	161.71	183.80	166.73	185.71	175.07	176.86
10.5	23.1	135.92	147.61	174.07	163.01	166.24	188.03	170.63	189.56	179.30	180.74
11.0	24.2	141.48	151.79	178.23	167.32	170.80	192.21	174.53	193.52	183.46	184.85
11.5	25.3	145.03	155.49	182.93	171.48	175.22	197.08	178.83	198.35	188.03	189.56
12.0	26.4	148.61	159.31	187.56	175.66	179.55	201.84	183.08	203.12	192.58	194.18
12.5	27.5	152.25	163.09	192.33	180.02	184.09	206.76	187.62	208.08	197.08	198.94
13.0	28.6	155.95	166.85	197.15	184.33	188.56	211.64	192.21	213.10	201.53	203.76
13.5	29.7	159.53	170.63	201.73	188.50	192.78	216.40	196.61	218.05	206.07	208.40
14.0	30.8	163.01	174.39	206.12	192.51	197.05	221.22	201.11	222.89	210.58	213.03
14.5	31.9	166.73	178.30	210.78	196.77	201.46	226.32	205.60	227.65	215.27	217.53
15.0	33.0	170.26	182.20	215.40	201.06	205.88	231.27	209.99	232.40	219.89	222.10
15.5	34.1	173.34	185.39	219.24	204.70	209.62	235.24	213.89	235.98	223.87	225.92
16.0	35.2	176.52	188.68	223.08	208.08	213.43	239.16	217.79	239.55	227.84	229.76
16.5	36.3	180.02	192.39	227.56	212.22	217.69	243.97	222.16	244.23	232.40	234.27
17.0	37.4	183.52	196.09	232.08	216.34	221.91	248.67	226.52	248.87	236.91	238.76
17.5	38.5	187.22	199.94	236.37	220.56	226.25	253.48	230.74	253.76	241.46	243.44
18.0	39.6	191.01	203.71	240.67	224.80	230.66	258.41	234.91	258.65	246.09	248.15
18.5	40.7	194.58	207.47	245.55	228.91	235.01	263.08	239.16	263.69	250.77	252.51
19.0	41.8	198.07	211.31	250.41	233.05	239.35	267.78	243.44	268.73	255.36	256.88
19.5	42.9	201.73	215.00	254.55	237.16	243.69	272.51	248.01	273.03	259.70	261.30
20.0	44.0	205.30	218.76	258.65	241.20	248.01	277.05	252.51	277.43	264.08	265.66
20.5	45.1	208.19	221.95	262.64	244.49	251.48	280.82	255.54	280.55	267.91	269.97
21.0	46.2	211.11	225.14	266.53	247.66	254.77	284.46	258.46	283.53	271.74	274.21
21.5	47.3	214.82	228.85	271.15	251.99	259.63	289.08	263.08	288.29	276.39	278.84
22.0	48.4	218.51	232.60	275.80	256.15	264.53	293.70	267.66	293.11	281.00	283.47
22.5	49.5	222.02	236.44	280.16	260.36	269.04	298.59	271.95	298.23	285.60	288.21
23.0	50.6	225.73	240.14	284.33	264.56	273.61	303.37	276.13	303.17	290.20	292.93
23.5	51.7	229.09	243.84	288.62	268.46	277.67	307.87	280.48	307.72	294.45	297.34
24.0	52.8	232.55	247.55	292.86	272.51	282.03	312.22	284.72	312.22	298.69	301.64
24.5	53.9	235.78	251.32	297.48	276.71	286.43	317.14	289.68	317.39	303.37	306.27
25.0	55.0	239.16	255.02	302.16	281.00	290.90	321.96	294.59	322.54	307.99	310.84
25.5	56.1	241.14	258.14	305.75	284.12	294.12	325.46	298.06	326.25	311.49	314.42
26.0	57.2	243.06	261.25	309.31	287.38	297.44	328.90	301.53	329.96	314.87	318.04
26.5	58.3	246.56	265.02	313.88	291.40	301.74	333.52	305.82	334.52	319.30	322.68
27.0	59.4	250.06	268.65	318.43	295.43	305.92	338.10	309.93	339.02	323.68	327.20
27.5	60.5	253.59	272.35	322.89	299.60	310.21	342.79	314.34	343.86	328.45	331.67
28.0	61.6	257.01	276.13	327.20	303.83	314.55	347.49	318.66	348.69	333.05	336.17
28.5	62.7	260.64	279.89	331.47	307.99	318.96	352.17	323.20	353.43	337.43	340.68
29.0	63.8	264.08	283.59	335.65	312.03	323.38	356.81	327.78	358.13	341.94	345.11
29.5	64.9	267.52	287.29	339.87	316.07	327.90	361.31	331.80	363.01	346.16	349.66
30.0	66.0	270.90	290.93	344.11	320.09	332.38	365.65	335.85	367.78	350.31	354.22
FOR VOLUMETRIC EQUIVALENT (VE)* OVER 30 – ADD PER 0.5											
		3.19	3.61	4.21	3.9	4.12	4.38	4.14	4.52	4.24	4.34

HOW TO DETERMINE YOUR SHIPMENT COST

1. Identify your destination, then find the corresponding rate code on the previous page.
2. Use the rate code indicated and determine the price, according to the weight of the shipment.

NOTE: The destination code is to be used on the manifest and not in lieu of the full destination name in the address block.

™ Trademark of Canada Post Corporation.

Tracked Packet™ – International prices



DESTINATION	CODE	RATE CODE	MAX. WEIGHT (KG)
Australia	AU	5	2
Austria	AT	2	2
Belgium	BE	2	2
Brazil	BR	7	2
China	CN	9	2
Croatia	HR	3	2
Denmark	DK	2	2
Estonia	EE	3	2
Finland	FI	2	2
France	FR	2	2
Germany	DE	2	2
Hong Kong	HK	4	2
Hungary	HU	2	2
Iceland	IS	2	2
India	IN	6	2
Ireland	IE	2	2
Israel	IL	8	2
Italy	IT	2	2
Japan	JP	4	2
Latvia	LV	3	2
Lebanon	LB	8	2
Lithuania	LT	3	2
Luxembourg	LU	2	2
Malaysia	MY	4	2
Malta	MT	2	2
Mexico	MX	1	2
Netherlands	NL	2	2
New Zealand	NZ	5	2
Norway	NO	2	2
Poland	PL	3	2
Portugal	PT	2	2
Singapore	SG	4	2
Korea, South	KR	4	2
Spain	ES	2	2
Sweden	SE	2	2
Switzerland	CH	2	2
Taiwan	TW	4	2
Turkey	TR	8	2
Ukraine	UA	2	2
United Arab Emirates	AE	8	2
United Kingdom	GB	2	2

™ Trademark of Canada Post Corporation.

Tracked Packet™ – International prices



WEIGHT (UP TO AND INCLUDING)		RATE CODE / PRICE (\$)									
IN KG	IN LB.	1	2	3	4	5	6	7	8	9	10
0.1	0.2	28.88	32.19	40.77	34.47	35.22	40.55	39.16	43.39	38.14	43.88
0.25	0.5	36.81	41.03	51.99	43.95	44.89	51.69	49.93	55.32	48.65	55.95
0.5	1.1	48.44	53.39	67.47	57.32	58.61	66.98	64.83	71.57	63.37	72.34
1.0	2.2	60.15	68.97	83.93	73.68	74.89	84.75	81.96	88.40	80.69	88.31
1.5	3.3	63.72	76.52	93.76	81.71	84.03	96.23	93.06	101.16	89.34	100.38
2.0	4.4	69.46	84.95	104.88	90.73	92.70	106.44	105.04	115.23	99.11	113.79

™ Trademark of Canada Post Corporation.

Small Packet™ International prices



DESTINATION	CODE	RATE CODE	MAX. WEIGHT (KG)	DESTINATION	CODE	RATE CODE	MAX. WEIGHT (KG)	DESTINATION	CODE	RATE CODE	MAX. WEIGHT (KG)
Afghanistan	AF	6	2	Gabon	GA	10	2	Nigeria	NG	10	2
Aland Islands	AX	2	2	Gambia	GM	10	2	Niue	NU	10	2
Albania	AL	3	2	Georgia	GE	10	2	Norfolk Island	NF	5	2
Algeria	DZ	10	2	Germany	DE	2	2	Norway	NO	2	2
Andorra	AD	2	2	Ghana	GH	10	2	Oman	OM	8	2
Angola	AO	10	2	Gibraltar	GI	2	2	Pakistan	PK	6	2
Anguilla	AI	1	2	Greece	GR	2	2	Panama	PA	1	2
Antarctica	AQ	10	2	Greenland	GL	2	2	Papua New Guinea	PG	10	2
Antigua and Barbuda	AG	1	2	Grenada	GD	1	2	Paraguay	PY	7	2
Argentina	AR	7	2	Guadeloupe	GP	1	2	Peru	PE	7	2
Armenia	AM	10	2	Guatemala	GT	1	2	Philippines	PH	6	2
Aruba	AW	1	2	Guernsey	GG	2	2	Pitcairn	PN	10	2
Ascension	AC	10	2	Guinea	GN	10	2	Poland	PL	3	2
Australia	AU	5	2	Guinea-Bissau	GW	10	2	Portugal	PT	2	2
Austria	AT	2	2	Guyana	GY	7	2	Qatar	QA	8	2
Azerbaijan	AZ	10	2	Haiti	HT	1	2	Réunion	RE	10	2
Bahamas	BS	1	2	Heard and McDonald Islands	HM	5	2	Romania	RO	3	2
Bahrain	BH	8	2	Holy See (Vatican)	VA	2	2	Russian Federation	RU	3	2
Bangladesh	BD	6	2	Honduras	HN	1	2	Rwanda	RW	10	2
Barbados	BB	1	2	Hong Kong	HK	4	2	S Georgia/S Sandwich Islands	GS	10	2
Belarus	BY	3	2	Hungary	HU	2	2	Saint Barthelemy	BL	1	2
Belgium	BE	2	2	Iceland	IS	2	2	Saint Helena	SH	10	2
Belize	BZ	1	2	India	IN	6	2	Saint Kitts and Nevis	KN	1	2
Benin	BJ	10	2	Indonesia	ID	6	2	Saint Lucia	LC	1	2
Bermuda	BM	1	2	Iran	IR	10	2	Saint Martin	MF	1	2
Bhutan	BT	6	2	Iraq*	IQ	8	2	Saint Pierre and Miquelon	PM	2	2
Bolivia	BO	7	2	Ireland	IE	2	2	Samoa	WS	10	2
Bosnia-Herzegovina	BA	3	2	Isle of Man	IM	2	2	San Marino	SM	2	2
Botswana	BW	10	2	Israel	IL	8	2	Sao Tome and Principe	ST	10	2
Bouvet Island	BV	5	2	Italy	IT	2	2	Saudi Arabia	SA	8	2
Brazil	BR	7	2	Jamaica	JM	1	2	Senegal	SN	10	2
British Indian Ocean Territory	IO	10	2	Japan	JP	4	2	Serbia	RS	3	2
British Virgin Islands	VG	1	2	Jersey	JE	2	2	Seychelles	SC	10	2
Brunei Darussalam	BN	6	2	Jordan	JO	8	2	Sierra Leone	SL	10	2
Bulgaria	BG	3	2	Kazakhstan	KZ	10	2	Singapore	SG	4	2
Burkina Faso	BF	10	2	Kenya	KE	10	2	Sint Maarten (Netherlands)	SX	1	2
Burundi	BI	10	2	Kiribati	KI	6	2	Slovakia	SK	3	2
Cambodia	KH	6	2	Korea, Dem. People's Republic	KP	10	2	Slovenia	SI	3	2
Cameroon	CM	10	2	Korea, South	KR	4	2	Solomon Islands	SB	10	2
Cape Verde	CV	10	2	Kosovo	XZ	3	2	South Africa	ZA	10	2
Cayman Islands	KY	1	2	Kuwait	KW	8	2	South Sudan	SS	10	2
Central African Republic	CF	10	2	Kyrgyzstan	KG	10	2	Spain	ES	2	2
Chad	TD	10	2	Lao, People's Dem. Republic	LA	6	2	Sri Lanka	LK	6	2
Chile	CL	7	2	Latvia	LV	3	2	Saint Vincent and Grenadines	VC	1	2
China	CN	9	2	Lebanon*	LB	8	2	Sudan	SD	10	2
Christmas Island	CX	5	2	Lesotho	LS	10	2	Suriname	SR	7	2
Cocos (Keeling) Islands	CC	5	2	Liberia	LR	10	2	Svalbard and Jan Mayen	SJ	2	2
Colombia	CO	7	2	Libya	LY	10	2	Sweden	SE	2	2
Comoros	KM	10	2	Liechtenstein	LI	2	2	Switzerland	CH	2	2
Congo	CG	10	2	Lithuania	LT	3	2	Syria	SY	8	2
Congo, Democratic Republic	CD	10	2	Luxembourg	LU	2	2	Taiwan	TW	4	2
Cook Islands	CK	10	2	Macau	MO	4	2	Tajikistan	TJ	10	2
Costa Rica	CR	1	2	Macedonia	MK	3	2	Tanzania	TZ	10	2
Côte d'Ivoire	CI	10	2	Madagascar	MG	10	2	Thailand	TH	4	2
Croatia	HR	3	2	Malawi	MW	10	2	Timor-Leste*	TL	6	2
Cuba	CU	1	2	Malaysia	MY	4	2	Togo	TG	10	2
Curaçao	CW	1	2	Maldives	MV	6	2	Tokelau	TK	10	2
Cyprus	CY	2	2	Mali	ML	10	2	Tonga	TO	10	2
Czech Republic	CZ	2	2	Malta	MT	2	2	Trinidad and Tobago	TT	1	2
Denmark	DK	2	2	Martinique	MQ	1	2	Tristan da Cunha	TA	10	2
Djibouti	DJ	10	2	Mauritania	MR	10	2	Tunisia	TN	10	2
Dominica	DM	1	2	Mauritius	MU	10	2	Turkey	TR	8	2
Dominican Republic	DO	1	2	Mayotte	YT	10	2	Turkmenistan	TM	10	2
Dutch Caribbean	BQ	1	2	Mexico	MX	1	2	Turks and Caicos Islands	TC	1	2
Ecuador	EC	7	2	Moldova, Republic	MD	3	2	Tuvalu	TV	10	2
Egypt	EG	8	2	Monaco	MC	2	2	Uganda	UG	10	2
El Salvador	SV	1	2	Mongolia	MN	10	2	Ukraine	UA	2	2
Equatorial Guinea	GQ	10	2	Montenegro	ME	3	2	United Arab Emirates	AE	8	2
Eritrea	ER	10	2	Montserrat	MS	1	2	United Kingdom	GB	2	2
Estonia	EE	3	2	Morocco	MA	10	2	Uruguay	UY	7	2
Eswatini	SZ	10	2	Mozambique	MZ	10	2	Uzbekistan	UZ	10	2
Ethiopia	ET	10	2	Myanmar	MM	4	2	Vanuatu	VU	10	2
Falkland Islands	FK	7	2	Namibia	NA	10	2	Venezuela	VE	7	2
Faroe Islands	FO	2	2	Nauru	NR	6	2	Vietnam	VN	6	2
Fiji	FJ	10	2	Nepal	NP	6	2	Wallis and Futuna	WF	10	2
Finland	FI	2	2	Netherlands	NL	2	2	West Bank and Gaza Strip	PS	8	2
France	FR	2	2	New Caledonia	NC	10	2	Western Sahara	EH	10	2
French Guiana	GF	7	2	New Zealand	NZ	5	2	Yemen	YE	8	2
French Polynesia	PF	6	2	Nicaragua	NI	1	2	Zambia	ZM	10	2
French Southern Territories	TF	5	2	Niger	NE	10	2	Zimbabwe	ZW	10	2

*Air only

™ Trademark of Canada Post Corporation.

Small Packet™ International prices



Small Packet™ International – Air

WEIGHT (UP TO AND INCLUDING)		RATE CODE / PRICE (\$)									
IN KG	IN LB.	1	2	3	4	5	6	7	8	9	10
0.1	0.2	11.67	11.16	13.59	12.12	12.53	12.68	12.68	13.19	13.15	13.93
0.25	0.5	12.78	12.20	14.87	13.27	13.71	13.89	13.89	14.45	14.38	15.24
0.5	1.1	23.85	22.80	27.80	25.14	26.01	25.98	25.96	27.04	26.89	27.74
1.0	2.2	44.97	43.61	51.63	46.05	47.39	49.14	49.54	50.29	49.37	53.02
1.5	3.3	51.31	54.58	64.89	57.75	61.84	67.82	63.54	64.43	61.89	67.97
2.0	4.4	57.63	65.55	78.14	69.40	71.94	79.00	77.52	78.58	74.38	82.86

Small Packet™ International – Surface

WEIGHT (UP TO AND INCLUDING)		RATE CODE / PRICE (\$)									
IN KG	IN LB.	1	2	3	4	5	6	7	8	9	10
0.25	0.5	9.84	9.92	10.48	10.20	10.32	10.33	10.38	10.51	10.44	10.70
0.5	1.1	13.78	13.58	15.83	14.32	14.70	14.70	15.07	15.35	15.15	15.45
1.0	2.2	23.03	23.04	26.00	24.14	24.56	24.65	25.47	25.93	25.24	26.50
1.5	3.3	28.42	27.68	32.18	29.81	30.25	30.48	31.81	32.29	31.15	33.98
2.0	4.4	33.80	32.30	38.32	35.48	35.99	36.31	38.13	38.69	37.02	41.47

™Trademark of Canada Post Corporation.

Size and speed

SIZE	SPEED
Maximum Standard envelopes: 245 mm x 156 mm x 5 mm Standard cards and postcards: 235 mm x 120 mm x N/A Other Letter-post: 380 mm x 270 mm x 20 mm	4 to 7 business days
Minimum 140 mm x 90 mm x 0.18 mm	4 to 7 business days

N/A: Not applicable

Features, options and surcharge prices

CATEGORY	PRICES
Return to Sender	No charge
Registered Mail™	\$21.00 plus applicable Letter-post postage
Liability Coverage*	Included (up to a maximum of \$60)
Advice of Receipt (AR)†	\$2.92

* Some conditions and exceptions apply.

† The Advice of Receipt card is only available at the time of mailing.

Letter-post pricing table

STANDARD (ENVELOPES, CARDS AND POSTCARDS)	0-30 G	30-50 G
Stamps	\$2.92	\$4.17

OTHER (NON-STANDARD AND OVERSIZE)	0-100 G	100-200 G	200-500 G
Stamps	\$6.88	\$11.99	\$23.97

™ Trademark of Canada Post Corporation.



Other products and services

Mail Forwarding

Move prices

CATEGORY	PROVINCIAL		NATIONAL		U.S. / INTERNATIONAL	
	4 MONTHS	12 MONTHS	4 MONTHS	12 MONTHS	4 MONTHS	12 MONTHS
Residential	\$63.00	\$95.25	\$78.25	\$119.25	\$185.50	\$275.25
Additional name*	\$4.00	\$4.00	\$4.00	\$4.00	\$6.00	\$6.00
Business	\$189.25	\$294.00	\$234.75	\$367.50	\$547.25	\$831.00
Additional individual name*	\$4.00	\$4.00	\$4.00	\$4.00	\$6.00	\$6.00

NOTES:

- When applying for the Mail Forwarding service to manage an estate and receive mail addressed to a deceased individual, the Mail Forwarding for moves service must be purchased. If the deceased person had a business located at the same address, the business price for the Mail Forwarding for moves service would apply.
- Additional fees may apply for businesses identified as receiving high volumes of mail. Contact Customer Service for more information at 1-800-267-1177.

* Up to four additional names.

Temporary relocation prices

CATEGORY	PROVINCIAL		NATIONAL		U.S. / INTERNATIONAL	
	3 MONTHS OR LESS	ADDITIONAL MONTH	3 MONTHS OR LESS	ADDITIONAL MONTH	3 MONTHS OR LESS	ADDITIONAL MONTH
Residential	\$58.50	\$19.50	\$73.50	\$24.50	\$108.00	\$36.00
Additional name*	\$4.00		\$4.00		\$6.00	
Business	\$107.00 per month		\$134.75 per month		\$255.50 per month	
Additional individual name*	\$4.00		\$4.00		\$6.00	

NOTE: A customer may cancel the Mail Forwarding service at any time by presenting the receipt at any post office. However, no refund will be granted once the service has commenced. School requests will be processed as a business request.

* Up to four additional names.

Hold Mail

CATEGORY	PRICE	
Residential	\$23.25 for 10 weekdays* or less	\$11.50 per additional 5 weekdays
Additional name†	\$4.00	\$4.00
Business	\$48.50 for 5 weekdays* or less	\$9.50 per additional weekday
Additional individual name†	\$4.00	\$4.00

NOTE: A customer may cancel the Hold Mail service at any time by presenting the receipt at any post office. However, no refund will be granted once the service has commenced. School requests will be processed as a business request.

* Weekdays include statutory holidays.

† Up to four additional names.

Postage supplies

DEFINITIVE STAMPS	PRICE
LETTERMAIL™ STANDARD	
Single stamp (up to 30 g)	\$1.15
PERMANENT™ STAMPS*	
Stamp booklet – 10 x 99¢	\$9.90
Stamp coil – 50 x 99¢	\$49.50
Stamp coil – 100 x 99¢	\$99.00
POSTAGE STAMP PANE – MEDIUM VALUE DEFINITIVE STAMPS	
Stamp booklet – 6 x \$1.40 – United States	\$8.40
Stamp booklet – 6 x \$2.09 – Oversized mail	\$12.54
Stamp booklet – 6 x \$2.92 – International	\$17.52
Stamp coil – 50 x \$1.40 – United States	\$70.00
Stamp coil – 50 x \$2.09 – Oversized mail	\$104.50
Stamp coil – 50 x \$2.92 – International	\$146.00
Low value definitive stamps – 1¢, 2¢, 3¢, 4¢, 5¢, 6¢, 7¢, 8¢, 9¢, 10¢, 22¢, 25¢	Face value
POSTAGE STAMP PANE – HIGH VALUE DEFINITIVES	
Stamp pane – 16 x \$1.00	\$16.00
Stamp pane – 16 x \$2.00	\$32.00
Stamp pane – 4 x \$5.00	\$20.00
Stamp pane – 4 x \$8.00	\$32.00
Stamp pane – 2 x \$10.00	\$20.00

* The Permanent™ stamp is a non-denominated stamp with a postage value of 99¢.

Postage-paid envelopes

POSTAGE-PAID ENVELOPES	PRICE (EACH)	PRICE (PACK OF 10)
No. 10	N/A	\$11.10
No. 10 – Single	\$1.35	N/A

N/A: Not applicable

Official First Day Cover

OFFICIAL FIRST DAY COVERS	PRICE
Special collectible envelopes with stamps cancelled on the day and at the place of issue, with background information about the stamp issue.	Applicable postage plus \$1.00

Money Orders

All domestic postal money orders use the fee code "0".

FEE CODE	PRICE
0 (Canada)	\$8.50

NOTE: The maximum amount of a money order in Canadian currency is \$999.99.

Postal box prices are effective on January 1, of any given year.

Postal boxes

KEY DEPOSIT	PRICE
A set of two postal box keys	\$15.00 (Canada Post does not provide additional keys)
One 24-hour security access postal box key	\$15.90 (Canada Post does not provide additional keys)

Postal box pricing tables

To determine which pricing table to use, consult your local post office.

NOTE: Contract customers may pay by account to renew their postal box rentals. For more information, visit canadapost.ca/postalboxes.

Postal box prices for urban areas (excluding urban-core areas)

CATEGORY	POSTAL BOXES	APPROXIMATE SIZE	3 MONTHS	6 MONTHS	ANNUAL
A	Small or general delivery	90 mm x 130 mm x 360 mm	\$69.00	\$124.00	\$187.00
B	Medium	140 mm x 130 mm x 360 mm	\$94.00	\$166.00	\$250.00
C	Large	290 mm x 130 mm x 360 mm	\$121.00	\$217.00	\$328.00
D	X-Large	290 mm x 270 mm x 360 mm	\$149.00	\$263.00	\$395.00
E	XX-Large	600 mm x 280 mm x 360 mm	\$322.00	\$573.00	\$853.00
Container and bag service			\$330.00	\$590.00	\$875.00

Postal box prices for urban-core areas

As per list of forward sortation areas (FSAs)*

CATEGORY	POSTAL BOXES	APPROXIMATE SIZE	3 MONTHS	6 MONTHS	ANNUAL
A	Small or general delivery	90 mm x 130 mm x 360 mm	\$79.00	\$142.00	\$209.00
B	Medium	140 mm x 130 mm x 360 mm	\$94.00	\$166.00	\$250.00
C	Large	290 mm x 130 mm x 360 mm	\$135.00	\$238.00	\$357.00
D	X-Large	290 mm x 270 mm x 360 mm	\$167.00	\$297.00	\$446.00
E	XX-Large	600 mm x 280 mm x 360 mm	\$322.00	\$573.00	\$853.00
Container and bag service			\$330.00	\$590.00	\$875.00

* Defined FSAs for urban-core areas: B2W-B3A, B3H-B3L, B3P, G1H-G1N, G1R, G1S, G6V, H1A, H1B, H1E-H1N, H1R-H1Z, H2A-H2E, H2H-H2L, H2N-H2Y, H3A-H3H, H3K-H3T, H3W-H3Z, H4A-H4G, H4J, H4L, H4N, H4R, H4V, H4W, H4Z, H5B, H7A, H7E-H7H, H7L-H7R, H7T-H7Y, H8N-H8P, H8S, H8Y, H9B, H9C, H9H, H9R, H9S, H9W, H9X, J4P, J8X-J9A, K1A, K1G, K1H, K1K-K1S, K1Y, K1Z, K2P, L1G-L1K, L1N, L1S, L1T, L2M, L2N, L2R-L2T, L4M, L4N, L4T, L4W-L4Z, L5A-L5N, L5R, L5T, L5V, L6H-L6M, L8L-L8P, L8S, L9A, L9C, M1B-M1W, M2H-M2N, M2R, M3A-M3C, M3H, M3J, M3L-M3N, M4A-M4K, M4M-M4P, M4S, M4T, M4W, M4Y, M5A-M5C, M5E, M5H, M5J, M5M, M5N, M5R-M5W, M6A-M6S, M8V-M8Y, M9A, M9C, M9L-M9N, M9R, M9V, M9W, N4S, N4T, N5V-N5Y, N6A, N6C, N6H, N6J, N8X, N8Y, N9A-N9C, R2H, R2K, R2V-R2X, R3A-R3C, R3G, R3H, R3L, R3M, S4N-S4V, S4X, T2A, T2E, T2G, T2K, T2N, T2P, T2S, T2T, T5G-T5K, T5M, T5N, T5W, T6A-T6G, V6A-V6G, V6Z, V7X and V7Y.

Postal box prices for rural areas

CATEGORY	POSTAL BOXES	APPROXIMATE SIZE	3 MONTHS	6 MONTHS	ANNUAL
A	Small or general delivery	90 mm x 130 mm x 360 mm	\$69.00	\$124.00	\$187.00
B	Medium	140 mm x 130 mm x 360 mm	\$94.00	\$166.00	\$250.00
C	Large	290 mm x 130 mm x 360 mm	\$121.00	\$217.00	\$328.00
D	X-Large	290 mm x 270 mm x 360 mm	\$149.00	\$263.00	\$395.00
E	XX-Large	600 mm x 280 mm x 360 mm	\$322.00	\$573.00	\$853.00
Container and bag service			\$330.00	\$590.00	\$875.00

™ Trademark of Canada Post Corporation.

Postal box refund

Refund prices for urban areas (excluding urban-core areas)

RENTAL OR RENEWAL PERIOD	SIZE A	SIZE B	SIZE C	SIZE D	SIZE E	BAG OR CONTAINER
3 MONTHS						
Cancellation during the first 5 days				Full refund		
After the first 5 days				No refund		
6 MONTHS						
Cancellation during the first 5 days				Full refund		
After first 5 days, within first 3 months	\$20.67	\$27.67	\$36.17	\$43.83	\$95.50	\$98.33
After 3 months				No refund		
12 MONTHS						
Cancellation during the first 5 days				Full refund		
After first 5 days, within first 3 months	\$46.75	\$62.50	\$82.00	\$98.75	\$213.25	\$218.75
After first 3 months, within first 6 months	\$31.17	\$41.67	\$54.67	\$65.83	\$142.17	\$145.83
After 6 months				No refund		

Refund prices for urban-core areas

RENTAL OR RENEWAL PERIOD	SIZE A	SIZE B	SIZE C	SIZE D	SIZE E,	BAG OR CONTAINER
3 MONTHS						
Cancellation during the first 5 days				Full refund		
After the first 5 days				No refund		
6 MONTHS						
Cancellation during the first 5 days				Full refund		
After first 5 days, within first 3 months	\$23.67	\$27.67	\$39.67	\$49.50	\$95.50	\$98.33
After 3 months				No refund		
12 MONTHS						
Cancellation during the first 5 days				Full refund		
After first 5 days, within first 3 months	\$52.25	\$62.50	\$89.25	\$111.50	\$213.25	\$218.75
After first 3 months, within first 6 months	\$34.83	\$41.67	\$59.50	\$74.33	\$142.17	\$145.83
After 6 months				No refund		

Postal box refund tables (continued)

Refund prices for rural areas

RENTAL OR RENEWAL PERIOD	SIZE A	SIZE B	SIZE C	SIZE D	SIZE E	BAG OR CONTAINER
3 MONTHS						
Cancellation during the first 5 days				Full refund		
After the first 5 days				No refund		
6 MONTHS						
Cancellation during the first 5 days				Full refund		
After first 5 days, within first 3 months	\$20.67	\$27.67	\$36.17	\$43.83	\$95.50	\$98.33
After 3 months				No refund		
12 MONTHS						
Cancellation during the first 5 days				Full refund		
After first 5 days, within first 3 months	\$46.75	\$62.50	\$82.00	\$98.75	\$213.25	\$218.75
After first 3 months, within first 6 months	\$31.17	\$41.67	\$54.67	\$65.83	\$142.17	\$145.83
After 6 months				No refund		

Refund prices for general delivery

RENTAL OR RENEWAL PERIOD	URBAN AREAS	URBAN-CORE AREAS	RURAL AREAS
3 MONTHS			
Cancellation during the first 5 days			Full refund
After the first 5 days			No refund
6 MONTHS			
Cancellation during the first 5 days			Full refund
After first 5 days, within first 3 months	\$20.67	\$23.67	\$20.67
After 3 months			No refund
12 MONTHS			
Cancellation during the first 5 days			Full refund
After first 5 days, within first 3 months	\$46.75	\$52.25	\$46.75
After first 3 months, within first 6 months	\$31.17	\$34.83	\$31.17
After 6 months			No refund

Replacement of keys

REPLACEMENT OF KEYS	PRICE
Community mailbox (CMB)	\$29.00
Postal box	\$15.00